



Search Tags: All

Project Count: 30



Bahá'í House of Worship of South America

Santiago, Chile

Project Contacts: [Amy Hackney](#), [James Parker](#)

Designed by Siamak Hariri of Hariri Pontarini Architects, the Chile Baha'i House of Worship sits on a hillside set against the Andes Mountains. At nearly 100 ft high, the temple features nine...

Services: [Building Enclosure Design](#), [Materials Design](#), [Structural Design](#)

Markets: [Religious](#)

Keywords: [Award Winning](#), [Base Isolation](#), [Glass and Glazing](#), [High-Performance/Advanced Enclosures](#), [International](#), [Laboratory Testing and Analysis](#), [Materials Analysis](#), [Materials Testing for Design](#), [Religious](#), [Seismic Isolation](#), [Signature Project](#), [Spaceframe/Shell Structure](#), [Stone](#), [Structural Glass](#)



Summer Star Wildlife Sanctuary

Boylston, MA

Project Contacts: [Erik Farrington](#), [Pedro Sifre](#)

As a gateway to the expansive forty-five acre sanctuary, the Trailhead House offers visitors an opportunity to learn about the area's woodlands and wildlife. Given the sanctuary's focus on...

Services: [Building Enclosure Design](#), [Structural Design](#)

Markets: [Cultural](#)

Keywords: [Award Winning](#), [BIM](#), [Concrete](#), [Green / Sustainable Design](#), [LEED Projects](#), [Metal-Steel](#), [Revit/BIM](#), [Wood](#)



New York State Capitol Building

Albany, NY

Project Contacts: [Susan Knack-Brown](#), [Niklas Vigener](#)

The New York State Capitol was designed by a succession of architects, including H.H. Richardson and Leopold Eidlitz. Constructed in stages between 1870 and 1900, the building features Second...

Services: [Building Enclosure Investigation](#), [Building Enclosure Rehabilitation](#)

Markets: [Government](#)

Keywords: [Award Winning](#), [Condition Assessment](#), [Construction Administration](#), [Historic](#), [Industrial Rope Access](#), [Masonry](#), [Masonry-Terra Cotta](#), [Metal](#), [Metal-Copper](#), [National Register of Historic Places](#), [Preservation Technology](#), [Roofing](#), [Skylight](#), [Stair](#), [Stone-Granite](#), [Stone-Slate](#), [Water Leakage](#)



University of Arizona, Phoenix Biomedical Campus, Health Science Education Building

Phoenix, AZ

Project Contacts: [Delbert Bern](#), [Eric Schroter](#)

The six-story Health Sciences Education Building at the Phoenix Biomedical Campus houses classrooms, lecture halls, offices, and a below-grade research core. The cladding consists of a 45,000 sq...

Services: [Building Enclosure Design](#)

Markets: [Education - College & Prep](#)

Keywords: [Award Winning](#), [Below-Grade](#), [Building Science](#), [Classroom](#), [Curtain Wall](#), [Design-Build](#), [Field Testing](#), [LEED Projects](#), [Metal](#), [Metal-Copper](#), [Signature Project](#), [Thermal and Moisture Drive](#)



Children's Hospital of Philadelphia, Main Building Expansion

Philadelphia, PA

Project Contacts: [Michael Louis](#), [Dean Rutila](#)

The nine-story Main Building, constructed in the early 1970s, featured a glass and aluminum curtain wall. SGH investigated water leakage and prepared repair concepts for the owner's consideration...

Services: [Building Enclosure Design](#), [Building Enclosure Investigation](#)

Markets: [Health Care](#)

Keywords: [Construction Administration](#), [New Construction](#), [Curtain Wall](#), [Glass and Glazing](#), [Signature Project](#), [Skylight](#), [Water Leakage](#), [Waterproofing](#), [Windows](#)



140 New Montgomery Street

San Francisco, CA

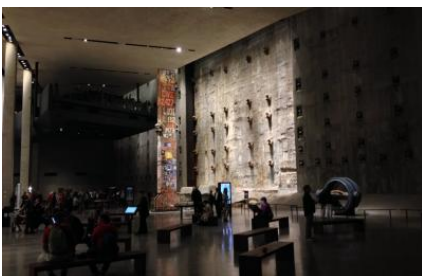
Project Contacts: [Carolyn Searls](#)

Completed in the mid-1920s, 140 New Montgomery Street is one of the early skyscrapers built in San Francisco. The Art Deco high-rise, originally known as the Pacific Telephone and Telegraph...

Services: [Building Enclosure Rehabilitation](#)

Markets: [Office](#)

Keywords: [Adaptive Reuse](#), [Award Winning](#), [Glass and Glazing](#), [High Rise](#), [Historic](#), [Masonry](#), [Masonry-Terra Cotta](#), [National Register of Historic Places](#), [Preservation Technology](#), [Roof Replacement](#), [Roofing](#), [Windows](#)



National September 11 Memorial and Museum

New York, NY

Project Contacts: [William Konicki](#), [Nathaniel Smith](#), [Milan Vatovec](#)

The "bathtub" slurry wall at the World Trade Center (WTC) site survived when the WTC towers collapsed in 2001, making it a symbol of endurance. WTC site redevelopers wanted a section

of the wall...

Services: Structural Investigation, Structural Rehabilitation

Markets: Cultural

Keywords: Award Winning, Foundation, Geotechnical, Monumental Buildings, Museum, Retaining Wall, Signature Project, Structural Strengthening



Seabrook Station Nuclear Power Plant

Seabrook, NH

Project Contacts: Jesse Beaver, Said Bolourchi, Matthew Sherman

The discovery of alkali-silica reaction (ASR) in concrete structures at the Seabrook Station Nuclear Power Plant (Seabrook) was first documented case of ASR at any U.S. nuclear facility. The...

Services: Materials Investigation, Structural Investigation

Markets: Nuclear

Keywords: Concrete, Cracking, Field Testing, Laboratory Testing and Analysis, Nondestructive Testing, Petrography



Massachusetts State House

Boston, MA

Project Contacts: Susan Knack-Brown

The State House was constructed in three phases. The original Federal/Georgian building was designed by Charles Bulfinch and completed in 1798. In 1896, a renaissance revival Annex with yellow...

Services: Building Enclosure Rehabilitation, Structural Rehabilitation

Markets: Government

Keywords: Award Winning, Condition Assessment, Dome, Emergency Response, Historic, Masonry, National Register of Historic Places, Preservation Technology, Renewable Energy: Photovoltaics, Roofing, Water Leakage



San Francisco War Memorial Veterans Building

San Francisco, CA

Project Contacts: [Ronald Hamburger](#), [Stephen Harris](#), [Carolyn Searls](#)

The San Francisco War Memorial Veterans Building and adjacent Opera House are aesthetically-similar, Beaux-Arts structures commemorating U.S. veterans of World War I. The Veterans Building...

Services: [Building Enclosure Rehabilitation](#), [Structural Rehabilitation](#)

Markets: [Cultural](#)

Keywords: [Award Winning](#), [Code Compliance](#), [Historic](#), [Masonry](#), [Masonry-Terra Cotta](#), [Metal](#), [Metal-Steel](#), [Monumental Buildings](#), [National Register of Historic Places](#), [Preservation Technology](#), [Revit/BIM](#), [Roofing](#), [Seismic Engineering and Retrofit](#), [Skylight](#), [Stone-Granite](#), [Theater/Performing Arts](#)



Boston Harbor Islands Pavilion

Boston, MA

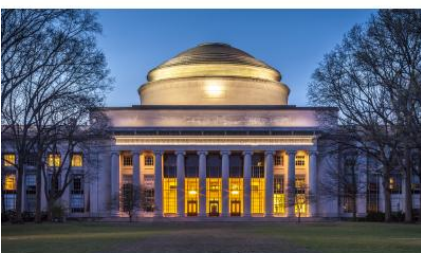
Project Contacts: [Matthew Johnson](#), [Paul Kassabian](#)

The Boston Harbor Island Alliance and the National Park Service wanted the first permanent structure on the Rose Kennedy Greenway to act as a beacon, attracting people to Boston's Harbor Islands....

Services: [Structural Design](#)

Markets: [Cultural](#)

Keywords: [Award Winning](#), [Concrete](#), [Construction Consulting](#), [Exhibitions/Park Pavilions](#), [Metal](#), [Metal-Steel](#), [Mockup](#), [Renewable Energy: Photovoltaics](#)



Massachusetts Institute of Technology, Building 10 Great Dome

Cambridge, MA

Project Contacts: [Peter Babaian](#), [Emily Hopps](#)

MIT's Main Group Buildings, dedicated in 1916, include Building 10 with its prominent limestone- and copper-clad

Great Dome. SGH investigated leakage into the Barker Library below the Great Dome...

Services: Building Enclosure Rehabilitation

Markets: Education - College & Prep

Keywords: Award Winning, Dome, Library, Masonry, Metal, Metal-Copper, Mockup, Preservation Technology, Signature Project, Stone-Limestone, Thermal and Moisture Drive, Waterproofing



Nemours Children's Hospital

Orlando, FL

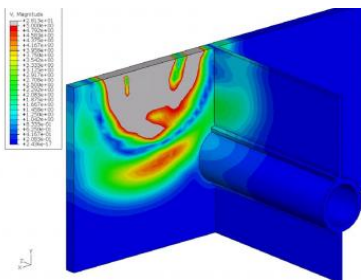
Project Contacts: Michael Bolduc, John Thomsen, Joseph Zona

The Nemours Children's Hospital includes four buildings on a 60-acre campus. The two seven-story, cast-in-place concrete hospital and clinic buildings and two steel-framed, two-story structures...

Services: Building Enclosure Design, Structural Design

Markets: Health Care

Keywords: Below-Ground Waterproofing, Building Enclosure Commissioning, Concrete, New Construction, Green / Sustainable Design, Green Roofs, Ground (Soil) Improvement, Hospital, LEED Projects, Revit/BIM



Harvard University Science Complex, MWRA Sewer

Allston, MA

Project Contacts: Arthur Davies, Daniel Valentine, Mehdi Zarghamee

Harvard University planned to locate a new science complex above a Massachusetts Water Resources Authority (MWRA) brick masonry pipeline that was over 115 years old. The University was concerned...

Services: Structural Investigation

Markets: Water/Wastewater

Keywords: Adjacent Construction, Masonry-Brick, Nonlinear, Pipe, Soil-Structure Interaction, Vibration / Fatigue Analysis



Storow Drive Interchange/Tunnels

Boston, MA

Project Contacts: [Rosalind Imbaro](#), [Paul Kelley](#)

Storow Drive, a parkway along the Charles River in Boston, carries more than 100,000 vehicles per day. The tunnels provide access to city streets, and are constructed of reinforced concrete...

Services: [Materials Rehabilitation](#), [Structural Design](#)

Markets: [Highway & Tunnel](#)

Keywords: [Award Winning](#), [Below-Grade](#), [Bridge](#), [Major Vehicular](#), [Concrete](#), [Construction Administration](#), [Cracking](#), [Emergency Response](#), [Field Testing](#), [Tunnel](#)



Bay Area Rapid Transit (BART), East Station Plaza, Danseurs (Dancing Ladies)

Union City, CA

Project Contacts: [John Sumnicht](#)

Union City sought to develop a civic plaza with a featured centerpiece and commissioned a terraced fountain with three bronze Danseurs on platforms positioned within the fountain. With the...

Services: [Structural Design](#)

Markets: [Cultural](#)

Keywords: [Art Work](#), [Award Winning](#), [Base Isolation](#), [Seismic Isolation](#)



Worcester Polytechnic Institute, Sports and Recreation Center

Worcester, MA

Project Contacts: [Sal Capobianco](#)

Recognizing sports and fitness are important to the campus community, Worcester Polytechnic Institute (WPI) wanted to update its current facilities by constructing a new sports and recreation...

Services: [Structural Design](#)

Markets: Education - College & Prep

Keywords: Athletic Field, Award Winning, Concrete, Concrete-Precast, Concrete-Prestressed, Long-Span Structure, Natatorium, Signature Project



Archdiocese of Boston, Multiple Building Condition Assessments

Boston, MA

Project Contacts: [Paul Kelley](#), [Milan Vatovec](#)

With a need to evaluate more than 100 properties with a total of 200 individual structures, the Archdiocese of Boston asked SGH to develop and implement a condition assessment program that...

Services: [Building Enclosure Investigation](#), [Structural Investigation](#)

Markets: Religious

Keywords: [Condition Assessment-Multi-Building](#), [Religious](#), [Spire/Bell Tower](#), [Term Contracts and IDIQs](#)



Lowden State Park, Indian Statue

Oregon, IL

Project Contacts: [Peter Babaian](#), [Jared Brew](#)

Designed by Lorado Taft, the Indian stands on a high bluff in Lowden State Park as a tribute to Native Americans. The 50 ft figure, dedicated in 1911, is composed of structural concrete with an...

Services: [Materials Rehabilitation](#)

Keywords: [Art Work](#), [Concrete](#), [Concrete Mix Design](#), [Historic](#), [Preservation Technology](#)



Bowdoin College, Whittier Field Support Building

Brunswick, ME

Project Contacts: Jason Der Ananian, Emily Hopps

Bowdoin College undertook a phased project to renovate the historic Whittier Field and Magee-Samuels Track. In the second phase, the college constructed a new wood-framed, single-story support...

Services: Building Enclosure Design

Keywords: Athletic Field, Building Enclosure Commissioning, Commissioning, Field Testing, LEED Projects, Wood



Loyola University, Alfie Norville Practice Facility

Chicago, IL

Project Contacts: Matthew Johnson

Named for the wife of Loyola alumni and basketball player Al Norville, the Alfie Norville Practice Facility will offer state-of-the-art training spaces for the university's athletes. The facility...

Services: Structural Design

Keywords: Athletic Field, Fasteners and Connections, Metal-Steel



4747 Bethesda Avenue

Bethesda, MD

Project Contacts: Bradford Carpenter, John Jackson

The JBG Smith's new headquarters at 4747 Bethesda Avenue gets its signature look from two-story-tall unitized curtain wall panels and curved, textured, stainless steel, spandrel panels. The...

Services: Building Enclosure Design

Keywords: Curtain Wall, Office, Peer Review, Retail



Columbia Generating Station, Spent Fuel Pool

Newport Beach, CA

Project Contacts: Philip Hashimoto, Mohamed Talaat

After the Fukushima Daiichi accident, the U.S. Nuclear Regulatory Commission (NRC) issued 10 CFR 50.54(f), a letter requiring licensees to perform a reevaluation of seismic hazard and take further...

Services: Structural Investigation

Keywords: Nuclear Facility, Seismic Analyses, Seismic Walkdown, Soil-Structure Interaction



2100 K Street NW

Washington, DC

Project Contacts: Bradford Carpenter, John Jackson

The International Finance Corporation (IFC) needed more space to house their growing workforce and expanded their global headquarters building at 2100 K Street NW with a new nine-story addition....

Services: Building Enclosure Design

Keywords: Addition, Construction Administration, Curtain Wall, Peer Review



Bangor Savings Bank Garage

Bangor, ME

Project Contacts: Michael Bolduc, Sal Capobianco

Bangor Savings Bank was looking to consolidate their operations by constructing a new headquarters with a five-story office building and a four-story parking garage along the Bangor waterfront....

Services: Structural Design

Keywords: Concrete, Parking Structure



New England Conservatory, Student Life and Performance Center

Boston, MA

Project Contacts: [Vince Cammalleri](#), [Jason Der Ananian](#)

The New England Conservatory wanted to create a hub for students by providing gathering spaces, dormitories, a library, practice rooms, and performance venues all in one new building. The divided...

Services: [Building Enclosure Design](#)

Keywords: [Building Science](#), [Construction Administration](#), [Curtain Wall](#), [Masonry-Terra Cotta](#), [Peer Review](#), [Theater/Performing Arts](#), [Thermal and Moisture Drive](#)



Emerson College, Little Building

Boston, MA

Project Contacts: [Michael Louis](#)

Completed in 1917, the Little Building is a twelve-story structure at 80 Boylston Street, facing historic Boston Common. The building housed a variety of businesses over the years, until Emerson...

Services: [Building Enclosure Rehabilitation](#)

Keywords: [Cast Stone](#), [Cladding / Recladding](#), [Concrete-Precast](#), [Curtain Wall](#), [Dormitory](#), [Preservation Technology](#)



The Point LIC, Paragon and Blanchard

Long Island City, NY

Project Contacts: [Matthew Normandeau](#), [Kevin Poulin](#)

The Point LIC, a new commercial development, reinvents two seven-story industrial buildings as the Paragon and Blanchard. The renovated buildings offer open office floor plans, ground-level retail...

Services: [Building Enclosure Rehabilitation](#), [Structural Design](#)

Keywords: [Adaptive Reuse](#), [Construction Administration](#), [Deterioration](#), [Masonry-Brick](#), [Masonry-Terra Cotta](#), [Masonry-Transitional](#), [Office](#), [Renovation](#), [Roof Replacement](#), [Roofing](#), [Structural Strengthening](#), [Windows](#)



288 Pacific

San Francisco, CA

Project Contacts: [Eric Schroter](#), [Travis St. Louis](#), [Jonathan Stafford](#)

Just one block from the Jackson Square Historic District, 288 Pacific incorporates modern residences with an early 1900s masonry structure. The project brings thirty-three condominiums to the...

Services: [Building Enclosure Design](#)

Keywords: [Award Winning](#), [Balcony](#), [Below-Ground Waterproofing](#), [Construction Administration](#), [Peer Review](#), [Plaza](#), [Residential](#), [Roofing](#), [Roofing](#), [Low-Sloped](#), [Waterproofing](#), [Window Wall](#)



One Bunker Hill

Los Angeles, CA

Project Contacts: [Amy Hackney](#), [Kevin OConnell](#)

The 1931 building was originally known as the Southern California Edison Building and served as the company's headquarters. The building's new owners wanted to renovate the fourteen-story...

Services: [Building Enclosure Rehabilitation](#), [Structural Design](#)

Keywords: [Balcony](#), [Canopy/Ceiling](#), [Structural Strengthening](#), [Tenant Improvements](#), [Waterproofing](#)