



Search Tags: Below-Ground Waterproofing

Project Count: 30



Nemours Children's Hospital

Orlando, FL

Project Contacts: [Michael Bolduc](#), [John Thomsen](#), [Joseph Zona](#)

The Nemours Children's Hospital includes four buildings on a 60-acre campus. The two seven-story, cast-in-place concrete hospital and clinic buildings and two steel-framed, two-story structures...

Services: [Building Enclosure Design](#), [Structural Design](#)

Markets: [Health Care](#)

Keywords: [Below-Ground Waterproofing](#), [Building Enclosure Commissioning](#), [Concrete](#), [New Construction](#), [Green / Sustainable Design](#), [Green Roofs](#), [Ground \(Soil\) Improvement](#), [Hospital](#), [LEED Projects](#), [Revit/BIM](#)



288 Pacific

San Francisco, CA

Project Contacts: [Eric Schroter](#), [Travis St. Louis](#), [Jonathan Stafford](#)

Just one block from the Jackson Square Historic District, 288 Pacific incorporates modern residences with an early 1900s masonry structure. The project brings thirty-three condominiums to the...

Services: [Building Enclosure Design](#)

Keywords: [Award Winning](#), [Balcony](#), [Below-Ground Waterproofing](#), [Construction Administration](#), [Peer Review](#), [Plaza](#), [Residential](#), [Roofing](#), [Roofing](#), [Low-Sloped](#), [Waterproofing](#), [Window Wall](#)



University of Virginia, University Hospital

Charlottesville, VA

Project Contacts: [Philip Frederick](#), [Nicholas Piteo](#), [Niklas Vigener](#)

To serve its growing community, the University Hospital needed to expand. The University of Virginia (UVA) wanted to renovate the existing hospital and construct a new addition on the site of an...

Services: [Building Enclosure Design](#)

Markets: [Health Care](#)

Keywords: [Addition](#), [Below-Grade](#), [Below-Ground Waterproofing](#), [Curtain Wall](#), [Hospital](#), [Peer Review](#), [Thermal and Moisture Drive](#)



Vision on Wilshire

Los Angeles, CA

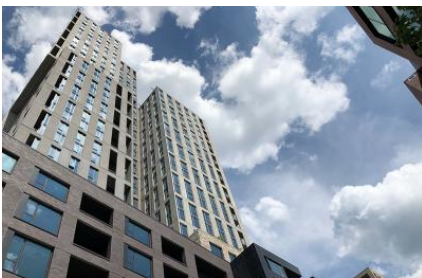
Project Contacts: [Amy Hackney](#)

Located on the corner of Wilshire and Crescent Heights Boulevards, the eighteen-story tower brings more than 150 apartments to the Beverly Grove neighborhood. The complex offers residents two...

Services: [Building Enclosure Design](#)

Markets: [Mixed-Use](#)

Keywords: [Award Winning](#), [Balcony](#), [Below-Ground Waterproofing](#), [High Rise](#), [Multi-Family](#), [Podium](#), [Residential](#), [Retail](#), [Roofing](#), [Walls](#), [Waterproofing](#), [Window Wall](#)



The Boro

Tysons Corner, VA

Project Contacts: [Bradford Carpenter](#), [John Karras](#)

The first phase of the eighteen-acre development in Tyson's Corner includes four new buildings and a shared podium, which extends two levels below grade. The buildings house 750 apartments, 400,...

Services: [Building Enclosure Design](#)

Markets: [Mixed-Use](#)

Keywords: [Below-Grade](#), [Below-Ground Waterproofing](#), [High Rise](#)

, Multi-Family, Podium, Residential, Retail, Roofing, Walls, Waterproofing, Window Wall, Windows



Harvard Kennedy School

Cambridge, MA

Project Contacts: [Jeffry Ceruti](#)

Harvard Kennedy School was looking to reinvent the campus and undertook a major project to add new flexible classrooms and collaboration areas, improve connectivity between the existing buildings...

Services: [Building Enclosure Design](#)

Markets: [Education - College & Prep](#)

Keywords: [Addition](#), [Additions-In-fill](#), [Below-Grade](#), [Below-Ground Waterproofing](#), [Curtain Wall](#), [Plaza](#)



K1 San Diego, 330 13th Street

San Diego, CA

Project Contacts: [Amy Hackney](#)

Adjacent to the city's new central library and just blocks away from Petco Park, K1 at 330 13th Street offers residents a variety of community areas for gathering and relaxing. The building...

Services: [Building Enclosure Design](#)

Markets: [Mixed-Use](#)

Keywords: [Below-Grade](#), [Below-Ground Waterproofing](#), [Construction Administration](#), [Peer Review](#), [Plaster](#), [Podium](#), [Residential](#), [Retail](#), [Walls](#), [Window Wall](#)



The Park Bankers Hill

San Diego, CA

Project Contacts: [Amy Hackney](#), [Kenneth Klein](#)

The Park Bankers Hill is mixed-use property with sixty condominiums and two- and three-story townhouses along the east side facing Balboa Park. Residents enjoy community

spaces, such as a club...

Services: [Building Enclosure Design](#)

Markets: [Mixed-Use](#)

Keywords: [Below-Ground Waterproofing](#), [Condominium](#), [High Rise](#), [Residential](#), [Roofing](#), [Waterproofing](#)



100 Binney Street

Cambridge, MA

Project Contacts: [Peter Babaian](#)

The ten-story building at 100 Binney offers attractive, leasable space to the tech and biotech companies moving into the growing Kendall Square area. The mid-rise structure nestles into the...

Services: [Building Enclosure Design](#)

Markets: [Office](#)

Keywords: [Balcony](#), [Below-Ground Waterproofing](#), [Concrete-Precast](#), [Curtain Wall](#), [Field Testing](#), [LEED Projects](#), [Office](#), [Roofing](#), [Waterproofing](#)



Midtown Center

Washington, DC

Project Contacts: [Bradford Carpenter](#), [John Jackson](#)

The development, which replaces the former Washington Post building, gets its signature look with corrugated, pre-patinated copper and glass curtain walls and three crisscrossing skybridges with...

Services: [Building Enclosure Design](#)

Markets: [Office](#)

Keywords: [Award Winning](#), [Below-Ground Waterproofing](#), [Curtain Wall](#), [Metal-Copper](#), [Plaza](#), [Roofing](#), [Waterproofing](#)



Carnegie Mellon University, David A. Tepper Quadrangle

Pittsburgh, PA

Project Contacts: Amy Hackney, Ryan Upp

Made possible by a generous donation from David A. Tepper, the five-story building on the new quadrangle will become the home for Carnegie Mellon's Tepper School of Business. The design connects...

Services: Building Enclosure Design

Markets: Education - College & Prep

Keywords: Below-Ground Waterproofing, Classroom, Roofing, Waterproofing



Duke Ellington School of the Arts

Washington, DC

Project Contacts: Bradford Carpenter

Duke Ellington School of the Arts, a DC public high school, offers a curriculum focused on both arts and academics. The original 1898 building, which is listed on the National Register of Historic...

Services: Building Enclosure Design

Markets: Education - K-12

Keywords: Additions-In-fill, Award Winning, Below-Ground Waterproofing, Classroom, Curtain Wall, Historic, National Register of Historic Places, Renovation, School, Skylight, Theater/Performing Arts, Walls, Waterproofing



John R. Oishei Children's Hospital

Buffalo, NY

Project Contacts: Peter Babaian, Pedro Sifre

The 185-bed John R. Oishei Children's Hospital replaces the city's 125-year-old Women and Children's Hospital of Buffalo. With a focus on patient and family comfort, the new 440,000 sq ft hospital...

Services: Building Enclosure Design, Structural Design

Markets: Health Care

Keywords: Award Winning, Below-Grade, Below-Ground Waterproofing, Braced Frame, Bridge, Pedestrian, Frame Moment, Metal-Steel, Revit/BIM, Truss, Tunnel



706 Madison Avenue

New York, NY

Project Contacts: [Kevin Poulin](#)

The retail development at 706 Madison Avenue is five above-grade and two below-grade stories of new construction surrounding an existing landmark building. The project included preserving the two...

Services: [Building Enclosure Design](#), [Structural Design](#), [Structural Rehabilitation](#)

Markets: [Retail](#)

Keywords: [Adaptive Reuse](#), [Below-Ground Waterproofing](#), [Braced Frame](#), [Foundation](#), [Frame Moment](#), [Historic](#), [Metal-Steel](#), [Monitoring](#), [Construction](#), [Preservation Technology](#)



Adaire

Tyson Corner, VA

Project Contacts: [Bradford Carpenter](#), [John Karras](#)

The Adaire brings apartments and retail to the blooming neighborhood around the new Spring Hill Metro station. With its curving geometry and alternating facade panels, the Adaire's tower attracts...

Services: [Building Enclosure Design](#), [Structural Design](#)

Markets: [Mixed-Use](#)

Keywords: [Award Winning](#), [Below-Ground Waterproofing](#), [Code Consulting](#), [Construction Administration](#), [Curtain Wall](#), [Fire Engineering](#), [Peer Review](#), [Podium](#), [Residential](#), [Retail](#), [Roofing](#), [Thermal and Moisture Drive](#), [Waterproofing](#)



50 & 60 Binney Street

Cambridge, MA

Project Contacts: [Peter Babaian](#)

Anchoring the eastern corner of the Alexandria Center at Kendall Square, 50 & 60 Binney Street offer 500,000 sq ft of rentable area for science and technology tenants and ground-level retail...

Services: [Building Enclosure Design](#)

Markets: [Office](#)

Keywords: [Award Winning](#), [Below-Ground Waterproofing](#), [Concrete-Precast](#), [Construction Administration](#), [Curtain Wall](#), [Field Testing](#), [Laboratory Testing and Analysis](#), [Mockup](#), [Peer Review](#), [Plaza](#), [Roofing](#), [Waterproofing](#)

Pierce Boston, 188 Brookline Avenue

Boston, MA

Project Contacts: [Joshua Kivela](#)

At its topping out, the 340 ft Pierce Boston became the tallest building in the Fenway neighborhood. The thirty-story tower includes 109 condominiums, 240 apartments, and ground-level retail. The...

Services: [Building Enclosure Design](#)

Markets: [Mixed-Use](#)

Keywords: [Below-Ground Waterproofing](#), [Construction Administration](#), [Curtain Wall](#), [High Rise](#), [Peer Review](#), [Residential](#), [Roofing](#), [Waterproofing](#)



Johns Hopkins University, Krieger Hall

Baltimore, MD

Project Contacts: [Joseph Rogers](#), [Scott Silvester](#), [Bryan Strohman](#), [Niklas Vigener](#)

Constructed in 1929, historic Krieger Hall sits on the Keyser Quadrangle at Johns Hopkins University (JHU). It connects to Ames Hall through a vestibule and colonnade walkway to the west and...

Services: [Building Enclosure Investigation](#), [Building Enclosure Rehabilitation](#), [Structural Investigation](#), [Structural Rehabilitation](#)



Markets: Education - College & Prep

Keywords: Award Winning, Below-Grade, Below-Ground Waterproofing, Civil, Drainage, Excavation Support, Foundation, Geotechnical, Masonry-Brick, Plaza, Preservation Technology , Structural Strengthening, Water Leakage, Waterproofing



524 South Park Street

Kalamazoo, MI

Project Contacts: Peter Babaian

Constructed in 2008, the one-story building at 524 South Park Street houses a medical radiology department and related spaces. As part of a property consolidation effort, Bronson Healthcare wanted...

Services: Building Enclosure Investigation

Markets: Health Care

Keywords: Below-Ground Waterproofing, Building Science, Condition Assessment, Curtain Wall, Due Diligence, Hospital, Office, Roofing, Roofing, Low-Sloped, Roofing, Steep-Sloped



Lucile Packard Children's Hospital Stanford

Palo Alto, CA

Project Contacts: Amy Hackney

With a new 521,000 sq ft addition, Lucile Packard Children's Hospital Stanford more than doubles the size of the existing hospital. The project team focused on the environment inside and out by...

Services: Building Enclosure Design

Markets: Health Care

Keywords: Award Winning, Below-Ground Waterproofing, Hospital, Plaza, Roofing, Roofing, Vegetative, Walls, Walls and Fenestration, Waterproofing, Windows



Davidson College, Interdisciplinary Science Center

Davidson, NC

Project Contacts: Jason Der Ananian, Pedro Sifre

Looking to expand and bring a more interdisciplinary approach to academics, Davidson College built the E. Craig Wall Academic Center. The project included the new 135,000 sq ft Wall Center,...

Services: Building Enclosure Design, Structural Design

Markets: Education - College & Prep

Keywords: Below-Ground Waterproofing, Building Science, Concrete, Condition Assessment, LEED Projects, Revit/BIM, Roofing, Seismic Engineering and Retrofit, Structural Strengthening, Thermal and Moisture Drive



Atlantic (formerly Russia) Wharf

Boston, MA

Project Contacts: Michael Louis

Atlantic Wharf (formerly Russia Wharf) combines residential, retail, and office space in one Fort Point Channel location. The project involved integrating three historic, low-rise buildings with a...

Services: Building Enclosure Design

Markets: Mixed-Use

Keywords: Below-Grade, Below-Ground Waterproofing, Cladding / Recladding, Curtain Wall, Facadism, High Rise, Historic, LEED Projects, Office, Plaza, Skylight, Walls, Waterproofing



Westlight at 1111 24th Street NW

Washington, DC

Project Contacts: Jeffrey Kerr

The mayor selected EastBanc's team to lead the West End's revitalization and redevelopment of the neighborhood's library, police special operations building, and fire station. The development...

Services: Building Enclosure Design

Markets: Mixed-Use

Keywords: Below-Grade, Below-Ground Waterproofing, Condominium, Construction Administration, Curtain Wall, Green Roofs, Library, Peer Review, Residential, Roofing, Roofing, Low-Sloped, Roofing, Vegetative, Waterproofing, Window Wall



Bowie State University, Center for Natural Sciences, Mathematics, and Nursing

Bowie, MD

Project Contacts: Jeffrey Kerr, Niklas Vigener

Bowie State University wanted a new home for their STEM and nursing department that would engage students, promote collaboration, and offer program flexibility. Primarily clad in curtain wall and...

Services: Building Enclosure Design

Markets: Education - College & Prep

Keywords: Award Winning, Below-Grade, Below-Ground Waterproofing, Construction Administration, Curtain Wall, Mockup, Roofing, Skylight

Menil Drawing Institute

Houston, TX

Project Contacts: Nick Floyd, Amy Hackney

Set on the thirty-acre Menil Campus, the Menil Drawing Institute is the first museum dedicated entirely to the art of drawing. In three distinct volumes the museum houses areas for study,...

Services: Building Enclosure Design

Markets: Cultural

Keywords: Award Winning, Below-Ground Waterproofing, Construction Administration, Museum, Peer Review, Roofing, Thermal and Moisture Drive, Walls, Waterproofing





Twenty|20 at 20 Child Street

Cambridge, MA

Project Contacts: [Joshua Kivela](#), [Michael Louis](#)

Leading the development at East Cambridge's NorthPoint site, Twenty|20 brings 355 apartment units to the growing neighborhood. The building also offers 8,600 sq ft of retail space and numerous...

Services: [Building Enclosure Design](#)

Markets: [Mixed-Use](#)

Keywords: [Below-Grade](#), [Below-Ground Waterproofing](#), [Curtain Wall](#), [Mockup](#), [Plaza](#), [Residential](#), [Roofing](#), [Walls](#), [Windows](#)



The Printing House West Village

New York, NY

Project Contacts: [David Jacoby](#), [Sean OBrien](#), [Kevin Poulin](#)

With the adaptive reuse of the 1911 Printing House, the project team created varying styles for the sixty-four residences, including condominiums, two luxury townhouses in a new addition, and...

Services: [Building Enclosure Design](#), [Structural Design](#)

Markets: [Residential - Condominium](#)

Keywords: [Adaptive Reuse](#), [Below-Ground Waterproofing](#), [Canopy/Ceiling](#), [Code Consulting](#), [Condominium](#), [Curtain Wall](#), [Fire Engineering](#), [Fire Protection](#), [Masonry-CMU](#), [Metal-Steel](#), [Renovation](#), [Residential](#), [Roofing](#), [Structural Strengthening](#), [Windows](#)



Austin Central Library

Austin, TX

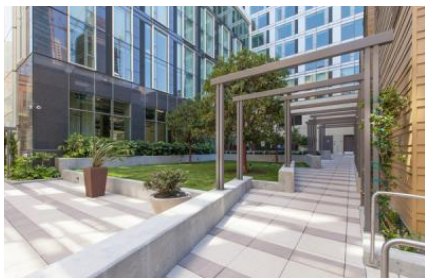
Project Contacts: [Peter Babaian](#)

The Austin Public Library wanted a more modern facility focusing on electronic information and serving as a community gathering space. The 198,000 sq ft building features a six-story atrium filled...

Services: [Building Enclosure Design](#)

Markets: [Government](#)

Keywords: [Air Barrier](#), [Award Winning](#), [Balcony](#), [Below-Grade](#), [Below-Ground Waterproofing](#), [Library](#), [Waterproofing](#)



Transbay Block 6

San Francisco, CA

Project Contacts: [Craig Allender](#), [Daniel Gibbons](#)

The development at Transbay Block 6 brings two new properties to the neighborhood. The Solaire at 299 Fremont Street includes a thirty-two-story residential tower, six-story podium building, seven...

Services: [Building Enclosure Design](#)

Markets: [Mixed-Use](#)

Keywords: [Balcony](#), [Below-Ground Waterproofing](#), [Construction Administration](#), [Field Testing](#), [Green Roofs](#), [High Rise](#), [Inspection](#), [Peer Review](#), [Podium](#), [Residential](#), [Roofing](#), [Waterproofing](#), [Windows](#)

Crossing 900

Redwood City, CA

Project Contacts: [Kenneth Klein](#), [James Mendygral](#)

Adjacent to the Redwood City Caltrain station, Crossing 900 includes two mid-rise office buildings sharing a landscaped podium over retail space and below-grade parking. The Level 4 podium...

Services: [Building Enclosure Design](#)

Markets: [Mixed-Use](#)

Keywords: [Below-Grade](#), [Below-Ground Waterproofing](#), [Construction Administration](#), [Office](#), [Podium](#), [Retail](#), [Roofing](#), [Seismic Isolation](#), [Waterproofing](#)

