



---

**Search Tags:** Structural Glass

**Project Count:** 13

---



## Bahá'í House of Worship of South America

**Santiago, Chile**

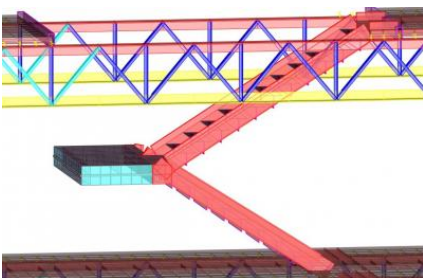
**Project Contacts:** [Amy Hackney](#), [James Parker](#)

Designed by Siamak Hariri of Hariri Pontarini Architects, the Chile Baha'i House of Worship sits on a hillside set against the Andes Mountains. At nearly 100 ft high, the temple features nine...

**Services:** [Building Enclosure Design](#), [Materials Design](#), [Structural Design](#)

**Markets:** [Religious](#)

**Keywords:** [Award Winning](#), [Base Isolation](#), [Glass and Glazing](#), [High-Performance/Advanced Enclosures](#), [International](#), [Laboratory Testing and Analysis](#), [Materials Analysis](#), [Materials Testing for Design](#), [Religious](#), [Seismic Isolation](#), [Signature Project](#), [Spaceframe/Shell Structure](#), [Stone](#), [Structural Glass](#)



## Tenant Fitout, 200 E. Randolph Street

**Chicago, IL**

**Project Contacts:** [Matthew Johnson](#)

This insurance company relocated their headquarters to the Aon Center, a prominent building in Chicago's skyline, and wanted to connect their space on the 32nd and 33rd floors with a feature stair...

**Services:** [Structural Design](#)

**Markets:** [Office](#)

**Keywords:** [Metal-Steel](#), [Railing](#), [Stair](#), [Structural Glass](#), [Structural Strengthening](#), [Tenant Improvements](#)



## Keyence Corporation, 500 Park Boulevard

Itasca, IL

**Project Contacts:** [Matthew Johnson](#)

When Keyence Corporation decided to lease additional space in the 1970s, fourteen-story building at Hamilton Lakes Business Park, they wanted to create an exciting office representing the...

**Services:** [Structural Design](#)

**Markets:** [Office](#)

**Keywords:** [Metal-Steel](#), [Railing](#), [Stair](#), [Structural Glass](#), [Tenant Improvements](#)



## Massachusetts Institute of Technology, International Design Center, Tectonics of Transparency: The Wall

Cambridge, MA

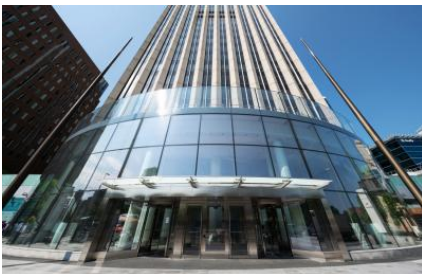
**Project Contacts:** [Matthew Johnson](#), [Paul Kassabian](#)

The sculpture, designed by Cristina Parreño, is located on the second floor of the Massachusetts Institute of Technology (MIT) Museum on Massachusetts Avenue as part of their International Design...

**Services:** [Materials Design](#), [Structural Design](#)

**Markets:** [Education - College & Prep](#)

**Keywords:** [Adhesion Testing](#), [Art Work](#), [Digital Fabrication](#), [Structural Glass](#)



## 160 East Elgin Street

Ottawa, ON

The owner of 160 East Elgin Street wanted to revitalize the streetscape at their twenty-eight-story tower by creating a striking front entryway. The renovation includes a curved and insulated...

**Services:** [Building Enclosure Design](#), [Structural Design](#)

**Markets:** [Office](#)

**Keywords:** Adaptive Reuse, Curtain Wall, Fasteners and Connections, Glass and Glazing, Office, Renovation, Structural Glass



## 2015 Design Biennial Boston, Tectonics of Transparency: The Tower

**Boston, MA**

**Project Contacts:** [Matthew Johnson](#), [Paul Kassabian](#)

Second in Cristina Parreño's Tectonics of Transparency series, The Tower was a temporary installation on the Rose Kennedy Greenway. To align with the exhibition's infrastructure heritage theme,...

**Markets:** [Cultural](#)

**Keywords:** [Adhesion Testing](#), [Art Work](#), [Structural Glass](#), [Temporary Structure](#)

## Union Station Transit Center

**Chicago, IL**

Led by the Chicago Department of Transportation, the Union Station Transit Center project creates an off-street Chicago Transit Authority (CTA) bus terminal adjacent to Chicago's bustling Union...

**Services:** [Structural Design](#)

**Markets:** [Transportation](#)

**Keywords:** [Canopy/Ceiling](#), [Construction Consulting](#), [Metal-Steel](#), [Structural Glass](#)



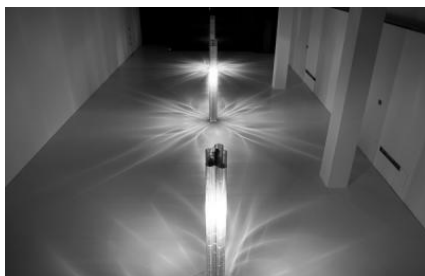
## Glass II at Milan Design Week 2017

**Waltham, MA**

**Project Contacts:** [Paul Kassabian](#)

Each year, il Salone del Mobile, more commonly known as Milan Design Week, features the latest in design. In 2017, The Mediated Matter Group at MIT Media Lab created Glass II for the Lexus YET...

**Services:** [Materials Design](#), [Structural Design](#)



**Markets:** Cultural

**Keywords:** Art Work, Laboratory Testing and Analysis, Materials Testing for Design, Structural Glass



## Navy Pier

**Chicago, IL**

**Project Contacts:** Vince Cammalleri, Matthew Johnson, Paul Kassabian, Matthew Normandeau

As part of a design competition, the James Corner Field Operations (JCFO) Team was selected to redesign the 3,000 ft long Navy Pier. The competition, spurred by the approaching 100th anniversary...

**Services:** Structural Design, Building Enclosure Design

**Markets:** Sports & Entertainment

**Keywords:** Below-Ground Waterproofing, Finite Element Analysis, Glass and Glazing, Materials Analysis, Pier/Wharf/Boat Ramp, Roofing, Stair, Structural Glass, Waterproofing, Wood



## The Cooper Gallery

**Cambridge, MA**

**Project Contacts:** Matthew Johnson, Susan Knack-Brown

Designed by David Adjaye, The Ethelbert Cooper Gallery of African & African American Art at Harvard University's Hutchins Center repurposes an existing commercial space as a new gallery. The...

**Services:** Building Enclosure Design, Structural Design

**Markets:** Cultural

**Keywords:** Adaptive Reuse, Award Winning, Building Science, Canopy/Ceiling, Fasteners and Connections, Laboratory Testing and Analysis, Materials Testing for Design, Museum, Structural Glass, Thermal and Moisture Drive, Wood





## Massachusetts Institute of Technology, Yin/Yang Pavilion at Simmons Hall

Cambridge, MA

Project Contacts: [James Parker](#)

The Yin/Yang Pavilion, a sculpture designed by Dan Graham, is located on the second floor terrace of Simmons Hall at MIT. The curving sculpture, constructed from 7 ft high panels of laminated two...

Services: [Structural Design](#)

Markets: [Education - College & Prep](#)

Keywords: [Art Work](#), [Exhibitions/Park Pavilions](#), [Finite Element Analysis](#), [Glass and Glazing](#), [Structural Glass](#)



## Harvard University, Center for Government and International Studies, Plaza Skylight

Cambridge, MA

Project Contacts: [James Parker](#), [Kevin Poulin](#), [John Thomsen](#)

The Center for Government and International Studies (CGIS) at Harvard University, designed by Pei Cobb Freed and Partners, incorporates a new landscaped plaza with a pyramidal glass skylight above...

Services: [Structural Design](#)

Markets: [Education - College & Prep](#)

Keywords: [Finite Element Analysis](#), [Library](#), [Peer Review](#), [Plaza](#), [Skylight](#), [Structural Glass](#)



## MBTA Kenmore Square Bus Station Canopy

Boston, MA

Project Contacts: [Paul Kelley](#)

The Kenmore Station Bus Canopy, designed by architect DiMella Shaffer, is part of the Kenmore Square Public Improvements Project. The canopy, whose geometry is derived from the section of a cone,...

Services: [Structural Design](#)

Markets: [Transportation](#)

**Keywords:** Peer Review, Spaceframe/Shell Structure, Station, Structural Glass