



---

**Search Tags:** Concrete-Cast-in-Place

**Project Count:** 19

---



## Boston University, Law Tower

**Boston, MA**

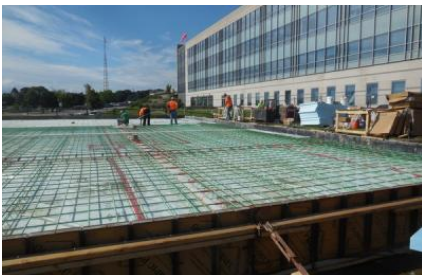
**Project Contacts:** [Matthew Bronski](#)

This seventeen-story structure is one of several architecturally significant, mid-century modernist concrete buildings designed by Josep Lluís Sert for Boston University's campus. The tower's...

**Services:** [Building Enclosure Rehabilitation](#), [Materials Rehabilitation](#), [Structural Rehabilitation](#)

**Markets:** [Education - College & Prep](#)

**Keywords:** [Award Winning](#), [Concrete](#), [Concrete Mix Design](#), [Concrete Rehabilitation](#), [Concrete-Cast-in-Place](#), [Concrete-Precast](#), [Mockup](#), [Preservation Technology](#)



## UMass Memorial Medical Center, University Campus, Helipad

**Worcester, MA**

**Project Contacts:** [Greggery Cohen](#), [Paul Millette](#)

The helipad at UMass Memorial Medical Center's University Campus is an essential part of the hospital's patient transport operations. Its cast-in-place concrete slab exhibited joint deterioration...

**Services:** [Structural Design](#), [Structural Investigation](#)

**Markets:** [Health Care](#)

**Keywords:** [Concrete](#), [Concrete Rehabilitation](#), [Concrete-Cast-in-Place](#), [Construction Administration](#), [Construction Engineering](#), [Deterioration](#)



## Harvard Towers Parking Garage

Cambridge, MA

**Project Contacts:** [Greggry Cohen](#), [Gustavo Tumialan](#)

Constructed around 1962, Harvard Towers includes a two-level, below-grade parking garage below the ground-level plaza. The intermediate elevated deck in the cast-in-place concrete parking...

**Services:** [Structural Investigation](#), [Structural Rehabilitation](#)

**Markets:** [Parking](#)

**Keywords:** [Award Winning](#), [Concrete](#), [Concrete Rehabilitation](#), [Concrete-Cast-in-Place](#), [Construction Administration](#), [Construction Engineering](#), [Parking Structure](#), [Residential](#), [Shoring/Temporary Structure](#)



## 900 West Washington Boulevard

Chicago, IL

**Project Contacts:** [Peter Babaian](#), [Matthew Johnson](#)

With its compact size and industrial aesthetics, 900 West blends with its West Loop neighborhood. The building includes twenty-two luxury condominiums, two penthouse units with city views, large...

**Services:** [Building Enclosure Design](#), [Structural Design](#)

**Markets:** [Residential - Condominium](#)

**Keywords:** [Concrete-Cast-in-Place](#), [Condominium](#), [Construction Administration](#), [Metal](#), [Metal-Steel](#), [Peer Review](#), [Revit/BIM](#), [Window Wall](#)



## Dedham Place at 3 Allied Drive Parking Garages

Dedham, MA

**Project Contacts:** [Greggry Cohen](#)

Three parking structures serve 3 Allied Drive: a two-level, steel-framed garage with hollow core planks below the five-story building; a precast double-tee garage to the east; and a two-level,...

**Services:** [Structural Rehabilitation](#)

**Markets:** [Parking](#)

**Keywords:** [Concrete](#), [Concrete Rehabilitation](#), [Concrete-Cast-in-Place](#), [Concrete-Precast](#), [Condition Assessment](#), [Construction Administration](#), [Due Diligence](#), [Fire Protection](#), [Metal-Steel](#), [Parking Structure](#)



## Louisiana State University Tiger Stadium

**Baton Rouge, LA**

**Project Contacts:** [Dominic Kelly](#), [Matthew Sherman](#)

Louisiana State University's (LSU's) Tiger Stadium was built in 1924 and was expanded in many stages. The north end zone structure was built in 1936 with integral student dormitories. As part of...

**Services:** [Structural Investigation](#), [Structural Rehabilitation](#)

**Markets:** [Education - College & Prep](#)

**Keywords:** [Arena/Stadium](#), [Concrete](#), [Concrete Rehabilitation](#), [Concrete-Cast-in-Place](#), [Facade Inspection](#), [Field Testing](#), [Laboratory Testing and Analysis](#), [Nondestructive Testing](#), [Petrography](#)



## Patricia and Phillip Frost Museum of Science, Gulf Stream Tank Formwork

**Miami, FL**

**Project Contacts:** [Matthew Johnson](#)

The new three-story Museum of Science is a living laboratory that invites visitors to learn about science and technology with an emphasis on South Florida's culture and ecosystem. The 250,000 sq...

**Services:** [Structural Design](#)

**Markets:** [Cultural](#)

**Keywords:** [Award Winning](#), [Computational Design](#), [Concrete](#), [Concrete-Cast-in-Place](#), [Construction Consulting](#), [Digital Fabrication](#), [Museum](#), [Tank](#)



## Massachusetts Institute of Technology, Simmons Hall

Cambridge, MA

**Project Contacts:** [James Parker](#), [John Thomsen](#)

Simmons Hall is a key component in MIT's campus initiative to develop buildings that serve as centers for student life and encourage more students to live on campus. The residence hall houses 350...

**Services:** [Structural Design](#)

**Markets:** [Education - College & Prep](#)

**Keywords:** [Award Winning](#), [Concrete](#), [Concrete-Cast-in-Place](#), [Concrete-Precast](#), [New Construction](#), [Dormitory](#), [Stair](#)



## Duke University, Environment Hall

Durham, NC

**Project Contacts:** [Pedro Sifre](#)

Environment Hall serves as the new home of Duke University's Nicholas School of the Environment and houses academic offices, teaching spaces, laboratories, and an eighty-seat lecture hall. ...

**Services:** [Structural Design](#)

**Markets:** [Education - College & Prep](#)

**Keywords:** [Award Winning](#), [Bridge](#), [Pedestrian](#), [Concrete-Cast-in-Place](#), [New Construction](#), [LEED Projects](#), [Laboratory](#), [Renewable Energy: Photovoltaics](#), [Revit/BIM](#), [School](#), [Shear Wall](#), [Stair](#)



## Brandeis University, Carl J. Shapiro Science Center

Waltham, MA

**Project Contacts:** [Michael Louis](#), [Derek McCowan](#), [Pedro Sifre](#)

The Carl J. Shapiro Science Center project consisted of 155,000 sq ft of new construction, 40,000 sq ft of renovated space, and infrastructure upgrades. The existing science complex comprises...



**Services:** Building Enclosure Design, Structural Design

**Markets:** Education - College & Prep

**Keywords:** Award Winning, Classroom, Concrete, Concrete-Cast-in-Place, Curtain Wall, Laboratory, Power, Roofing, School, Shear Wall, Tunnel, Waterproofing



## Miami Marine Stadium

**Miami, FL**

**Project Contacts:** Paul Kelley, Gustavo Tumialan

After Hurricane Andrew in 1992, the City of Miami closed the Miami Marine Stadium because of safety concerns. The building remained unused for seventeen years and continued to suffer exposure to...

**Services:** Materials Investigation, Structural Investigation

**Markets:** Sports & Entertainment

**Keywords:** Arena/Stadium, Award Winning, Concrete, Concrete-Cast-in-Place, Cracking, Finite Element Analysis, Laboratory Testing and Analysis, Petrography, Preservation Technology, Roofing



## MWRA, Blue Hills Covered Storage Design-Build Project

**Milton, MA**

As part of an effort to eliminate open distribution storage reservoirs, Massachusetts Water Resources Authority sought to construct two covered drinking water storage tanks. The Blue Hills Covered...

**Services:** Structural Design

**Markets:** Water/Wastewater

**Keywords:** Award Winning, Concrete, Concrete-Cast-in-Place, Concrete-Precast, Cracking, Design-Build, Drainage, Soil-Structure Interaction, Tank



## Longfellow Place 1 and 4

**Boston, MA**

One and Four Longfellow Place are twin high rise apartments buildings and part of Boston's Charles River Park development. The 38-story, cast-in-place concrete towers were built between 1972 to...

**Services:** [Structural Investigation](#)

**Markets:** [Residential - Condominium](#)

**Keywords:** [Award Winning](#), [Concrete](#), [Concrete-Cast-in-Place](#), [Condition Assessment](#), [Construction Administration](#), [Corrosion](#), [High Rise](#), [Petrography](#)



## Wilshire Boulevard Temple

**Los Angeles, CA**

**Project Contacts:** [Christopher Norton](#), [Carolyn Searls](#)

Dedicated in 1929, the Wilshire Boulevard Temple is the oldest synagogue in the Los Angeles area. The temple is a Los Angeles Historic-Cultural Monument and is listed on the National Register of...

**Services:** [Building Enclosure Rehabilitation](#)

**Markets:** [Religious](#)

**Keywords:** [Award Winning](#), [Cast Stone](#), [Concrete-Cast-in-Place](#), [Condition Assessment](#), [Cracking](#), [Dome](#), [Historic](#), [Leaded and Stained Glass](#), [Masonry](#), [Metal](#), [Metal-Copper](#), [National Register of Historic Places](#), [Preservation Technology](#), [Roofing](#), [Signature Project](#), [Stucco](#), [Water Leakage](#)



## Veterans Administration Medical Center

**Boston, MA**

The Veterans Administration (VA) wished to add a four-story ambulatory care facility adjoining the existing medical center. SGH was the structural engineer for the 100,000 sq ft addition, which we...

**Services:** [Structural Design](#)

**Markets:** [Health Care](#)

**Keywords:** Additions-In-fill, Concrete-Cast-in-Place, New Construction, Shear Wall



## Crom Corporation, Elevated Prestressed Concrete Water Tanks

Frankfort, KY

**Project Contacts:** [Atis Liepins](#)

Since the early 1980s, SGH has worked with Crom Corporation to assist them in their tank designs. Crom is one of the largest manufacturers of prestressed concrete tanks in the United States. The...

**Services:** [Structural Design](#)

**Markets:** [Water/Wastewater](#)

**Keywords:** [Concrete](#), [Concrete-Cast-in-Place](#), [Concrete-Post-tensioned](#), [Finite Element Analysis](#)



## Zurich Insurance Group, New Parking Garage

Baltimore, MD

Zurich's facility improvement plan required additional parking for over 1,000 vehicles and needed the parking structure to be operational within sixteen months from the start of design. SGH served...

**Services:** [Structural Design](#)

**Markets:** [Parking](#)

**Keywords:** [Below-Grade](#), [Concrete](#), [Concrete-Cast-in-Place](#), [Concrete-Post-tensioned](#), [New Construction](#), [Parking Structure](#)



## Museum of Science Parking Garage

Boston, MA

The Museum of Science parking garage was built in two phases in the late 1960s and partially spans the Charles River. After thirty years of exposure to weather and vehicles, chlorides from deicing...

**Services:** [Materials Rehabilitation](#), [Structural Investigation](#)

**Markets:** [Parking](#)

**Keywords:** Concrete, Concrete-Cast-in-Place, Concrete-Post-tensioned, Concrete-Precast, Condition Assessment, Corrosion, Parking Structure, Petrography



## Ashford Perimeter Center Garage

**Atlanta, GA**

**Project Contacts:** Paul Kelley

The Ashford Perimeter Center garage is a four-level, 700-car concrete parking structure with post-tensioned, flat slabs supported on concrete columns. During the garage construction, it was...

**Services:** Structural Rehabilitation

**Markets:** Parking

**Keywords:** Award Winning, Composites-FRP / CFRP / GFRP, Concrete, Concrete-Carbon Fiber Reinforced, Concrete-Cast-in-Place, Concrete-Post-tensioned, Construction Administration, Cracking, Due Diligence, Field Testing, Parking Structure, Plastic/Composite, Structural Adequacy Assessment, Waterproofing