



---

**Search Tags:** Shoring/Temporary Structure

**Project Count:** 19

---



## Whiskey Row, Main Street

**Louisville, KY**

**Project Contacts:** [Matthew Bronski](#), [Joseph Zona](#)

Whiskey Row comprises six adjacent historic distillery buildings on Louisville's Main Street that were abandoned and left to deteriorate for many years. The four-story buildings, constructed...

**Services:** [Building Enclosure Rehabilitation](#), [Structural Design](#)

**Markets:** [Mixed-Use](#)

**Keywords:** [Adaptive Reuse](#), [Facadism](#), [Historic](#), [Masonry](#), [Masonry-Brick](#), [Preservation Technology](#), [Shoring/Temporary Structure](#), [Structural Stabilization](#)



## The Richardson Olmsted Campus

**Buffalo, NY**

**Project Contacts:** [Matthew Bronski](#), [Erik Farrington](#), [Pedro Sifre](#)

Designed by H.H. Richardson and Frederick Law Olmsted in the 1870s, the 203-acre Richardson Olmsted Campus began as the Buffalo State Asylum for the Insane. The 38-building site is listed on the...

**Services:** [Building Enclosure Rehabilitation](#), [Structural Rehabilitation](#)

**Markets:** [Mixed-Use](#)

**Keywords:** [Adaptive Reuse](#), [Award Winning](#), [Condition Assessment](#), [Historic](#), [Hospital](#), [Masonry](#), [National Register of Historic Places](#), [Preservation Technology](#), [Revit/BIM](#), [Shoring/Temporary Structure](#), [Structural Stabilization](#), [Structural Strengthening](#)

## Standard Shoring Designs

Various, MA

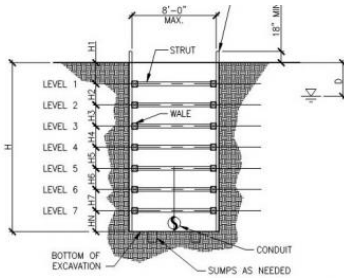
**Project Contacts:** [Scott DiFiore](#), [Bryan Strohmman](#)

To help them construct utility trenches, Bond Brothers needed standard shoring designs for temporary excavation support systems. SGH developed a library of standardized designs for use at project...

**Services:** [Structural Design](#)

**Markets:** [Other](#)

**Keywords:** [Construction Engineering](#), [Excavation Support](#), [Foundation](#), [Geotechnical](#), [Shoring/Temporary Structure](#)



## Government Center Station

Boston, MA

**Project Contacts:** [Rosalind Imbaro](#)

Although the station was modified many times since opening in 1898, Government Center Station lacked accessibility. The Improvements Project includes installing new elevators from the surface to...

**Services:** [Structural Design](#)

**Markets:** [Transportation](#)

**Keywords:** [Below-Grade](#), [Construction Consulting](#), [Construction Engineering](#), [Construction Staging](#), [Metal-Steel](#), [Shoring/Temporary Structure](#)



## Golden 1 Center

Sacramento, CA

**Project Contacts:** [Daniel Gibbons](#), [Kevin Moore](#)

The Sacramento Kings' new arena is in the heart of downtown Sacramento. To tie the building to the surrounding neighborhood, the arena's design blends inside and out with large overhead doors, an...

**Services:** [Structural Design](#)

**Markets:** [Sports & Entertainment](#)

**Keywords:** [Award Winning](#), [Construction Engineering](#), [Construction Staging](#)

, Curtain Wall, Plaza, Roofing, Roofing, Low-Sloped, Shoring/Temporary Structure, Waterproofing



## Harvard Towers Parking Garage

**Cambridge, MA**

**Project Contacts:** [Greggry Cohen](#), [Gustavo Tumialan](#)

Constructed around 1962, Harvard Towers includes a two-level, below-grade parking garage below the ground-level plaza. The intermediate elevated deck in the cast-in-place concrete parking...

**Services:** [Structural Investigation](#), [Structural Rehabilitation](#)

**Markets:** [Parking](#)

**Keywords:** [Award Winning](#), [Concrete](#), [Concrete Rehabilitation](#), [Concrete-Cast-in-Place](#), [Construction Administration](#), [Construction Engineering](#), [Parking Structure](#), [Residential](#), [Shoring/Temporary Structure](#)



## Navy Pier Ferris Wheel

**Chicago, IL**

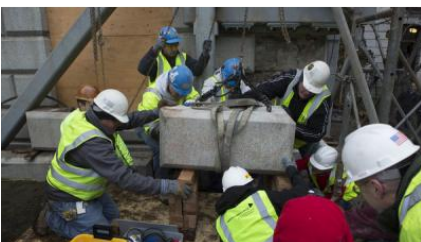
**Project Contacts:** [Matthew Johnson](#)

The existing Ferris wheel has been an iconic symbol of Chicago's Navy Pier for many years. In 2015, the mayor and pier officials announced plans to replace the Ferris wheel with a larger one. SGH...

**Services:** [Structural Investigation](#)

**Markets:** [Sports & Entertainment](#)

**Keywords:** [Award Winning](#), [Concrete-Precast](#), [Construction Engineering](#), [Shoring/Temporary Structure](#)



## Massachusetts State House Time Capsule

**Boston, MA**

**Project Contacts:** [Dominic Kelly](#), [Susan Knack-Brown](#)

On 4 July 1795, Samuel Adams, Paul Revere, and William Scollay led the procession from the old Massachusetts State House to the site of the new State House to lay the granite

cornerstone. In the...

**Services:** Building Enclosure Investigation, Materials Investigation, Structural Investigation

**Markets:** Government

**Keywords:** Historic, Monitoring, Monitoring, Construction, Preservation Technology , Shoring/Temporary Structure, Stone , Stone-Granite



## Brentford Hall

**Cambridge, MA**

**Project Contacts:** [Scott DiFiore](#), [William Konicki](#)

Constructed in the 1920s, Brentford Hall is a condominium building with load-bearing, mass-masonry walls supported by shallow footings. The abutter to Brentford Hall planned to demolish its...

**Services:** [Structural Investigation](#)

**Markets:** [Residential - Condominium](#)

**Keywords:** [Adjacent Construction](#), [Demolition](#), [Excavation Support](#), [Foundation](#), [Geotechnical](#), [Monitoring](#), [Monitoring](#), [Construction](#), [Shoring/Temporary Structure](#), [Underpinning](#)

## Franklin County Courthouse

**Greenfield, MA**

**Project Contacts:** [Dominic Kelly](#)

The Commonwealth of Massachusetts wanted to explore options for renovating and expanding the 1931 Franklin County Courthouse building. One proposed design concept involved retaining three existing...

**Services:** [Structural Investigation](#)

**Markets:** [Government](#)

**Keywords:** [Addition](#), [Condition Assessment](#), [Construction Engineering](#), [Courthouse](#), [Government](#), [Masonry-Brick](#), [Masonry-Transitional](#), [Shoring/Temporary Structure](#)







## 1625 North Ode Street

Arlington, VA

**Project Contacts:** [Scott Silvester](#)

In August 2011, the apartment building at 1625 North Ode Street experienced differential settlement and damage after the excavation support at an adjacent construction site failed. SGH assessed...

**Services:** [Building Enclosure Design](#), [Structural Investigation](#), [Structural Rehabilitation](#)

**Markets:** [Residential - Apartment](#)

**Keywords:** [Collapse](#), [Excavation Support](#), [Failure Investigation](#), [Masonry](#), [Masonry-Brick](#), [Masonry-CMU](#), [Masonry-Load Bearing](#), [Shoring/Temporary Structure](#), [Wood](#)



## Atlanta Botanical Garden Walkway Collapse Investigation

Atlanta, GA

**Project Contacts:** [Daniel Cook](#), [Dominic Kelly](#), [Scott Silvester](#)

On 19 December 2008, a large portion of the S-shaped, steel-framed walkway under construction at the Atlanta Botanical Garden suddenly collapsed during concrete placement operations. The...

**Services:** [Structural Investigation](#)

**Markets:** [Bridge](#)

**Keywords:** [Bridge](#), [Pedestrian](#), [Collapse](#), [Failure Investigation](#), [Metal-Steel](#), [Shoring/Temporary Structure](#)



## Union Park Detention Facility

Boston, MA

**Project Contacts:** [William Konicki](#), [Aaron Lewis](#)

The Massachusetts Water Resources Authority (MWRA) owns and operates five facilities that treat Combined Sewer Overflows (CSOs) during storm events before it reaches Boston Harbor and its tributary...

**Services:** [Structural Design](#)

**Markets:** [Other](#)

**Keywords:** Bulkhead/Cofferdam, Concrete Mix Design, Excavation Support, Pile, Shoring/Temporary Structure



## Clearway Street Apartments

**Boston, MA**

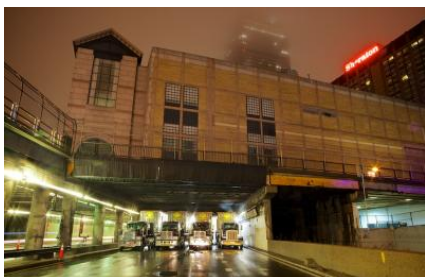
**Project Contacts:** [William Konicki](#), [Aaron Lewis](#)

The First Church of Christ, Scientist (TFCCS) owns and manages fourteen four-story brick apartment buildings on Clearway Street. TFCCS observed that the buildings, which were built in the 1890s,...

**Services:** [Structural Investigation](#)

**Markets:** [Residential - Apartment](#)

**Keywords:** [Foundation](#), [Groundwater](#), [Masonry-Brick](#), [Shoring/Temporary Structure](#), [Underpinning](#)



## Suspended Concrete Ceiling Removal over Massachusetts Turnpike

**Boston, MA**

**Project Contacts:** [Cory Brett](#), [Scott DiFiore](#)

Portions of the Hynes Convention Center (Hynes) are located directly over I-90, the Massachusetts Turnpike. A fifty-year-old, cast-in-place concrete slab suspended from the underside of the Hynes...

**Services:** [Structural Rehabilitation](#)

**Markets:** [Highway & Tunnel](#)

**Keywords:** [Award Winning](#), [Canopy/Ceiling](#), [Civil](#), [Concrete](#), [Construction Administration](#), [Construction Engineering](#), [Construction Staging](#), [Demolition](#), [Shoring/Temporary Structure](#), [Slab](#), [Tunnel](#)



## University of Massachusetts, Boston Harbor Campus

**Boston, MA**

**Project Contacts:** [Greggrey Cohen](#), [John Porter](#)

The UMass Boston Harbor Campus, originally constructed in the early 1970s, included five buildings. A plaza level two stories above grade interconnects these buildings and there are two...

**Services:** [Materials Investigation](#), [Structural Investigation](#), [Structural Rehabilitation](#)

**Markets:** [Education - College & Prep](#)

**Keywords:** [Concrete](#), [Parking Structure](#), [Plaza](#), [Shoring/Temporary Structure](#), [Structural Stabilization](#), [Waterproofing](#)



## CNRL Supermodules, Horizon Oil Sands Delayed Coker Unit Expansion, Fort McMurray

**Alberta, AB**

**Project Contacts:** [Dominic Kelly](#)

With modular construction, CNRL was able to expand the Delayed Coker Unit at their Horizon Oil Sands site while minimizing downtime during construction. The project utilized supermodule structures...

**Services:** [Structural Design](#)

**Markets:** [Oil & Gas](#)

**Keywords:** [Construction Consulting](#), [International](#), [Preengineered/Prefabricated/Modular](#), [Shoring/Temporary Structure](#)



## North Central Correctional Institute Steam Tunnel

**Gardner, MA**

**Project Contacts:** [Scott DiFiore](#), [Gustavo Tumialan](#)

The reinforced concrete utility tunnel at the North Central Correctional Institute (NCCI) is over 100 years old. As part of a utility upgrade, NCCI sought to remedy observed

displacement and...

**Services:** Structural Rehabilitation

**Keywords:** Concrete, Construction Engineering, Cracking, Shoring/Temporary Structure, Tunnel



## Massachusetts Bay Transportation Authority, Park Street Station

**Boston, MA**

**Project Contacts:** [William Konicki](#)

Park Street Station is the oldest subway station in the United States. As part of a system-wide upgrade of light rail transit stations for improved accessibility, the Massachusetts Bay...

**Services:** Structural Rehabilitation

**Markets:** Transportation

**Keywords:** Construction Engineering, Demolition, Field Testing, Geotechnical, Peer Review, Shoring/Temporary Structure, Station, Structural Adequacy Assessment, Structural Strengthening