



Search Tags: Roofing

Project Count: 30



New York State Capitol Building

Albany, NY

Project Contacts: [Susan Knack-Brown](#), [Niklas Vigener](#)

The New York State Capitol was designed by a succession of architects, including H.H. Richardson and Leopold Eidlitz. Constructed in stages between 1870 and 1900, the building features Second...

Services: [Building Enclosure Investigation](#), [Building Enclosure Rehabilitation](#)

Markets: [Government](#)

Keywords: [Award Winning](#), [Condition Assessment](#), [Construction Administration](#), [Historic](#), [Industrial Rope Access](#), [Masonry](#), [Masonry-Terra Cotta](#), [Metal](#), [Metal-Copper](#), [National Register of Historic Places](#), [Preservation Technology](#), [Roofing](#), [Skylight](#), [Stair](#), [Stone-Granite](#), [Stone-Slate](#), [Water Leakage](#)

140 New Montgomery Street

San Francisco, CA

Project Contacts: [Carolyn Searls](#)

Completed in the mid-1920s, 140 New Montgomery Street is one of the early skyscrapers built in San Francisco. The Art Deco high-rise, originally known as the Pacific Telephone and Telegraph...

Services: [Building Enclosure Rehabilitation](#)

Markets: [Office](#)

Keywords: [Adaptive Reuse](#), [Award Winning](#), [Glass and Glazing](#), [High Rise](#), [Historic](#), [Masonry](#), [Masonry-Terra Cotta](#), [National Register of Historic Places](#), [Preservation Technology](#), [Roof Replacement](#), [Roofing](#), [Windows](#)





Massachusetts State House

Boston, MA

Project Contacts: [Susan Knack-Brown](#)

The State House was constructed in three phases. The original Federal/Georgian building was designed by Charles Bulfinch and completed in 1798. In 1896, a renaissance revival Annex with yellow...

Services: [Building Enclosure Rehabilitation](#), [Structural Rehabilitation](#)

Markets: [Government](#)

Keywords: [Award Winning](#), [Condition Assessment](#), [Dome](#), [Emergency Response](#), [Historic](#), [Masonry](#), [National Register of Historic Places](#), [Preservation Technology](#), [Renewable Energy: Photovoltaics](#), [Roofing](#), [Water Leakage](#)



San Francisco War Memorial Veterans Building

San Francisco, CA

Project Contacts: [Ronald Hamburger](#), [Stephen Harris](#), [Carolyn Searls](#)

The San Francisco War Memorial Veterans Building and adjacent Opera House are aesthetically-similar, Beaux-Arts structures commemorating U.S. veterans of World War I. The Veterans Building...

Services: [Building Enclosure Rehabilitation](#), [Structural Rehabilitation](#)

Markets: [Cultural](#)

Keywords: [Award Winning](#), [Code Compliance](#), [Historic](#), [Masonry](#), [Masonry-Terra Cotta](#), [Metal](#), [Metal-Steel](#), [Monumental Buildings](#), [National Register of Historic Places](#), [Preservation Technology](#), [Revit/BIM](#), [Roofing](#), [Seismic Engineering and Retrofit](#), [Skylight](#), [Stone-Granite](#), [Theater/Performing Arts](#)



The Point LIC, Paragon and Blanchard

Long Island City, NY

Project Contacts: [Matthew Normandeau](#), [Kevin Poulin](#)

The Point LIC, a new commercial development, reinvents two seven-story industrial buildings as the Paragon and Blanchard. The renovated buildings offer open office floor plans, ground-level retail...

Services: [Building Enclosure Rehabilitation](#), [Structural Design](#)

Keywords: [Adaptive Reuse](#), [Construction Administration](#), [Deterioration](#), [Masonry-Brick](#), [Masonry-Terra Cotta](#), [Masonry-Transitional](#), [Office](#), [Renovation](#), [Roof Replacement](#), [Roofing](#), [Structural Strengthening](#), [Windows](#)

288 Pacific

San Francisco, CA

Project Contacts: [Eric Schroter](#), [Travis St. Louis](#), [Jonathan Stafford](#)

Just one block from the Jackson Square Historic District, 288 Pacific incorporates modern residences with an early 1900s masonry structure. The project brings thirty-three condominiums to the...

Services: [Building Enclosure Design](#)

Keywords: [Award Winning](#), [Balcony](#), [Below-Ground Waterproofing](#), [Construction Administration](#), [Peer Review](#), [Plaza](#), [Residential](#), [Roofing](#), [Roofing](#), [Low-Sloped](#), [Waterproofing](#), [Window Wall](#)



HITT Contracting, Co|Lab

Falls Church, VA

Project Contacts: [Jeffrey Kerr](#), [Eric Ober](#)

With a commitment to advancing the building industry, HITT Contracting sought to create an exciting new space to inspire collaborative research, testing, and learning. The two-story Co|Lab...

Services: [Building Enclosure Design](#), [Structural Design](#)

Keywords: [Heavy Timber](#), [Laboratory](#), [Roofing](#), [Wood](#)





Building Enclosure Condition Assessments for Schools

Chicago, IL

Project Contacts: [Peter Babaian](#)

SGH helped several schools in the Chicago area by assessing the condition of their buildings' enclosures and working with them to develop plans for future capital projects, maintenance, and repair...

Services: [Building Enclosure Design](#)

Keywords: [Condition Assessment](#), [Roofing](#), [School](#), [Walls](#), [Walls and Fenestration](#)



Philip Johnson Thesis House, 9 Ash Street

Cambridge, MA

Project Contacts: [Matthew Bronski](#), [Matthew Johnson](#)

Designed by Philip Johnson, the house at 9 Ash Street was his Harvard University Graduate School of Design (GSD) thesis project. He studied modularization and used prefabricated wood-framed panels...

Services: [Building Enclosure Rehabilitation](#), [Structural Rehabilitation](#)

Markets: [Cultural](#)

Keywords: [Preservation Technology](#) , [Residential](#), [Roofing](#), [Window Wall](#), [Wood](#)



Santa Monica College, Academy of Entertainment and Technology Campus

West Hollywood, CA

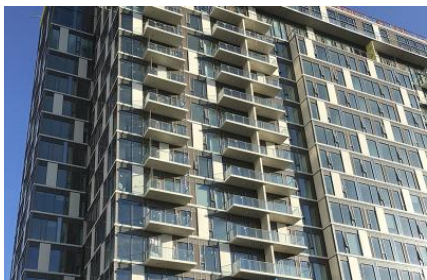
Project Contacts: [Amy Hackney](#), [Ryan Upp](#)

To expand and modernize their Academy of Entertainment and Technology Campus, Santa Monica College undertook a project to construct two new buildings and renovate an existing one. The project...

Services: [Building Enclosure Design](#), [Structural Design](#)

Markets: [Education - College & Prep](#)

Keywords: Award Winning, Classroom, Curtain Wall, Glass and Glazing, Masonry-Brick, Plaster, Roofing, Wall, Window



Vision on Wilshire

Los Angeles, CA

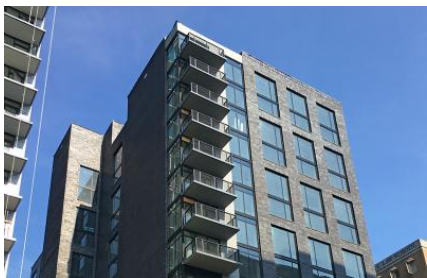
Project Contacts: [Amy Hackney](#)

Located on the corner of Wilshire and Crescent Heights Boulevards, the eighteen-story tower brings more than 150 apartments to the Beverly Grove neighborhood. The complex offers residents two...

Services: [Building Enclosure Design](#)

Markets: [Mixed-Use](#)

Keywords: Award Winning, Balcony, Below-Ground Waterproofing, High Rise, Multi-Family, Podium, Residential, Retail, Roofing, Walls, Waterproofing, Window Wall



Ascent Midtown

Atlanta, GA

Project Contacts: [Bradford Carpenter](#), [John Karras](#)

Ascent Midtown includes a 328-unit apartment tower and hotel that share a common podium with retail and below-grade parking. The complex offers many amenities, including a fitness center, a pool...

Services: [Building Enclosure Design](#)

Markets: [Mixed-Use](#)

Keywords: EIFS, Hotel, Masonry-Brick, Podium, Residential, Retail, Roofing, Waterproofing



The Boro

Tysons Corner, VA

Project Contacts: [Bradford Carpenter](#), [John Karras](#)

The first phase of the eighteen-acre development in Tyson's Corner includes four new buildings and a shared podium, which extends two levels below grade. The buildings house

750 apartments, 400,...

Services: Building Enclosure Design

Markets: Mixed-Use

Keywords: Below-Grade, Below-Ground Waterproofing, High Rise, Multi-Family, Podium, Residential, Retail, Roofing, Walls, Waterproofing, Window Wall, Windows



City Market at O, 880 P Street

Washington, DC

Project Contacts: Bradford Carpenter, John Karras

Constructed in 1881, the O Street Market was one of several public markets in Washington, DC. The project — which encompasses an entire city block — restores the historic market and incorporates...

Services: Building Enclosure Design

Markets: Mixed-Use

Keywords: Award Winning, Balcony, Green Roofs, Masonry-Brick, Residential, Roofing, Waterproofing, Window Wall



EXO

Reston, VA

Project Contacts: Bradford Carpenter, John Karras

EXO includes two high-rise residential towers with a linking building connecting them. The towers feature one of the nation's largest applications of electrochromic glass, which responds...

Services: Building Enclosure Design

Markets: Residential - Apartment

Keywords: Award Winning, Balcony, Curtain Wall, Glass and Glazing, Green Roofs, High Rise, Plaza, Residential, Roofing, Window Wall



Stanford University, Lathrop Library

Stanford, CA

Project Contacts: [Carolyn Searls](#)

Originally constructed as the Graduate School of Business, the Lathrop Library was converted to a library and auditorium in 2015. The building is distinguished by exposed cast-in-place concrete...

Services: [Building Enclosure Rehabilitation](#)

Markets: [Education - College & Prep](#)

Keywords: [Condition Assessment](#), [Library](#), [Preservation Technology](#), [Roof Replacement](#), [Roofing](#), [Roofing](#), [Clay Tile](#), [Roofing](#), [Low-Sloped](#)

The Treasury Building

Washington, DC

Project Contacts: [Nicholas Piteo](#), [Joseph Rogers](#), [Niklas Vigener](#)

The United States Treasury Building, including the North Court, was designated as a National Historic Landmark in 1972. Since its construction in the 1860s, the North Court has been modified many...

Services: [Building Enclosure Rehabilitation](#)

Markets: [Government](#)

Keywords: [Government](#), [National Register of Historic Places](#), [Roof Replacement](#), [Roofing](#)



U.S. Chamber of Commerce

Washington, DC

Project Contacts: [Eric Ober](#), [Joseph Rogers](#)

Designed by Cass Gilbert and constructed in the 1920s, the Chamber of Commerce is listed on the National Register of Historic Places. The street-facing elevations feature a story-high, granite-

Services: [Building Enclosure Rehabilitation](#)

Markets: [Office](#)

Keywords: [Condition Assessment](#), [Facade Inspection](#), [Failure Investigation](#), [Government](#), [Roof Replacement](#), [Roofing](#)





Eleven 40

Chicago, IL

Project Contacts: [Peter Babaian](#), [Emily OKeefe](#)

Topping out at twenty-six stories, Eleven 40 on South Wabash Avenue brings 320 rental apartments to Chicago's South Loop neighborhood. The glass-clad tower sits atop a four-story podium that...

Services: [Building Enclosure Design](#)

Markets: [Mixed-Use](#)

Keywords: [Construction Administration](#), [Curtain Wall](#), [Green Roofs](#), [High Rise](#), [Peer Review](#), [Podium](#), [Residential](#), [Retail](#), [Roofing](#), [Waterproofing](#), [Window Wall](#)



The Park Bankers Hill

San Diego, CA

Project Contacts: [Amy Hackney](#), [Kenneth Klein](#)

The Park Bankers Hill is mixed-use property with sixty condominiums and two- and three-story townhouses along the east side facing Balboa Park. Residents enjoy community spaces, such as a club...

Services: [Building Enclosure Design](#)

Markets: [Mixed-Use](#)

Keywords: [Below-Ground Waterproofing](#), [Condominium](#), [High Rise](#), [Residential](#), [Roofing](#), [Waterproofing](#)



100 Binney Street

Cambridge, MA

Project Contacts: [Peter Babaian](#)

The ten-story building at 100 Binney offers attractive, leasable space to the tech and biotech companies moving into the growing Kendall Square area. The mid-rise structure nestles into the...

Services: [Building Enclosure Design](#)

Markets: Office

Keywords: Balcony, Below-Ground Waterproofing, Concrete-Precast, Curtain Wall, Field Testing, LEED Projects, Office, Roofing, Waterproofing



PG&E Building, 215 Market Street

San Francisco, CA

Project Contacts: James Mendygral, Carolyn Searls

Now part of Pacific Gas & Electric Company's (PG&E's) General Offices, The Matson Shipping Building (215 Market Street) was constructed in 1924 and is listed on the National Register of...

Services: Building Enclosure Rehabilitation, Materials Rehabilitation

Markets: Mixed-Use

Keywords: High Rise, Historic, Masonry-Terra Cotta, Masonry-Transitional, National Register of Historic Places, Preservation Technology, Roofing, Windows



LaGuardia Airport, Airfield Configuration Program

Queens, NY

Project Contacts: Sean OBrien, Scott Bondi

LaGuardia Airport and Delta Airlines determined Terminals C and D had exceeded their useful life and were undersized for future needs. They planned to demolish the terminals and replace them with...

Services: Building Enclosure Design

Markets: Airport

Keywords: Airport, Building Science, Curtain Wall, Peer Review, Roofing, Walls, Walls and Fenestration, Waterproofing



Harvard University, Lowell House

Cambridge, MA

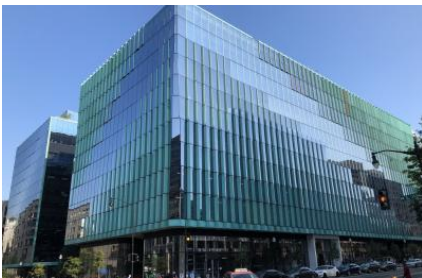
Project Contacts: [Matthew Bronski](#), [Erik Farrington](#), [Katherine Wissink](#)

Lowell House, a neo-Georgian building constructed in 1930, is Harvard University's largest undergraduate residence hall. As part of a larger dormitory renewal program, the university undertook a...

Services: [Building Enclosure Rehabilitation](#), [Structural Design](#)

Markets: [Education - College & Prep](#)

Keywords: [Dormitory](#), [Interior Renovation](#), [Masonry](#), [Masonry-Brick](#), [Metal-Copper](#), [Preservation Technology](#), [Renovation](#), [Revit/BIM](#), [Roof Replacement](#), [Roofing](#), [Stone-Limestone](#), [Stone-Slate](#), [Structural Strengthening](#), [Windows](#), [Wood](#)



Midtown Center

Washington, DC

Project Contacts: [Bradford Carpenter](#), [John Jackson](#)

The development, which replaces the former Washington Post building, gets its signature look with corrugated, pre-patinated copper and glass curtain walls and three crisscrossing skybridges with...

Services: [Building Enclosure Design](#)

Markets: [Office](#)

Keywords: [Award Winning](#), [Below-Ground Waterproofing](#), [Curtain Wall](#), [Metal-Copper](#), [Plaza](#), [Roofing](#), [Waterproofing](#)



CityCenterDC

Washington, DC

Project Contacts: [Bradford Carpenter](#)

CityCenterDC, designed by Foster + Partners and Shalom Baranes Associates, is a 2.5 million sq ft, mixed-use development sited at the former location of the convention center in downtown...

Services: [Building Enclosure Design](#)

Markets: [Mixed-Use](#)

Keywords: [Award Winning](#), [Below-Grade](#), [Condominium](#), [Curtain Wall](#)

, Glass and Glazing, Green / Sustainable Design, Green Roofs
, Masonry, Masonry-Terra Cotta, Office, Parking Structure,
Retail, Roofing, Windows



Carnegie Mellon University, David A. Tepper Quadrangle

Pittsburgh, PA

Project Contacts: [Amy Hackney](#), [Ryan Upp](#)

Made possible by a generous donation from David A. Tepper, the five-story building on the new quadrangle will become the home for Carnegie Mellon's Tepper School of Business. The design connects...

Services: [Building Enclosure Design](#)

Markets: [Education - College & Prep](#)

Keywords: [Below-Ground Waterproofing](#), [Classroom](#), [Roofing](#), [Waterproofing](#)



Providence Public Library

Providence, RI

Project Contacts: [Susan Knack-Brown](#)

The Providence Public Library includes the original 1900 renaissance masonry building and the 1953 neoclassical Empire Street Addition. SGH investigated the condition of the building enclosures,...

Services: [Building Enclosure Rehabilitation](#)

Markets: [Cultural](#)

Keywords: [Deterioration](#), [Facade Inspection](#), [Masonry-Brick](#), [Metal](#), [Metal-Copper](#), [Preservation Technology](#), [Roofing](#), [Stone](#), [Stone-Limestone](#), [Water Leakage](#)



Haverford College Libraries

Haverford, PA

Project Contacts: [Matthew Bronski](#), [Katherine Wissink](#)

The oldest portion of Magill Library at Haverford College was constructed in 1864 and with a 1898 addition is known as the Heritage Building. Subsequent additions were added to the stone masonry...

Services: [Building Enclosure Rehabilitation](#)

Markets: [Education - College & Prep](#)

Keywords: [Historic](#), [Masonry](#), [Preservation Technology](#), [Roofing](#), [Roofing](#), [Steep-Sloped](#), [Stone](#), [Stone-Slate](#), [Windows](#)



New Hampshire State House

Concord, NH

Project Contacts: [Jeffry Ceruti](#)

The monumental dome on the New Hampshire State House is gilded in gold leaf. After regilding in the early 1990s, the gold leaf started discoloring. The state wanted to understand the cause of...

Services: [Building Enclosure Investigation](#), [Materials Investigation](#)

Markets: [Office](#)

Keywords: [Award Winning](#), [Deterioration](#), [Dome](#), [Materials Analysis](#), [Metal-Copper](#), [Roofing](#)