



Search Tags: Residential

Project Count: 30



Jade Signature

Miami, FL

Project Contacts: [Jeffry Ceruti](#), [Sean Homem](#)

With an oceanfront site and three floors of amenities, the Jade Signature brings a resort experience to residents' everyday life. The fifty-five-story condominium building features an exposed cast...

Services: [Building Enclosure Design](#), [Structural Design](#)

Keywords: [Balcony](#), [Below-Ground Waterproofing](#), [Concrete](#), [Drainage](#), [High Rise](#), [Residential](#), [Waterproofing](#)



The Avery, Transbay Block 8, 400-450 Folsom Street

San Francisco, CA

Project Contacts: [Craig Allender](#), [Xiu Li](#)

The mixed-use development at 400 Folsom Street includes a fifty-five-story tower (The Avery) and two low-rise buildings designed by the executive architecture team of Office for Metropolitan...

Services: [Building Enclosure Design](#)

Keywords: [Below-Ground Waterproofing](#), [Curtain Wall](#), [High Rise](#), [Masonry-Brick](#), [Plaza](#), [Residential](#), [Retail](#), [Roofing](#), [Waterproofing](#), [Windows](#)



The Eddy, New Street

East Boston, MA

Project Contacts: [Jeffry Ceruti](#), [Christopher Grey](#)

The Eddy, a new residential development, sits along the waterfront in East Boston. The property includes 258 rental units in a seventeen-story tower and four-story building. In addition to views...

Services: [Building Enclosure Design](#)

Keywords: [Curtain Wall](#), [High Rise](#), [Preengineered/Prefabricated/Modular](#), [Residential](#), [Roofing](#), [Roofing](#), [Low-Sloped](#), [Windows](#)



St. Edward's University, The Pavilion

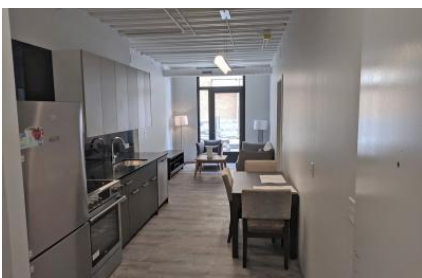
Austin, TX

Project Contacts: [Emily Hopps](#), [Amrish Patel](#)

With a growing student population, St. Edward's University needed more on-campus housing and undertook constructing The Pavilions. The multi-building complex includes 133 apartments and can house...

Services: [Building Enclosure Design](#)

Keywords: [Air Barrier](#), [Building Enclosure Commissioning](#), [Dormitory](#), [Masonry-Brick](#), [Mockup](#), [Peer Review](#), [Residential](#), [Roofing](#), [Thermal and Moisture Drive](#), [Windows](#)



The Arcade Residences, 1135 W Sheridan Road

Chicago, IL

Project Contacts: [Matthew Johnson](#)

The Arcade Residences is a seven-story mixed-use building near Loyola University. The development includes fifty-eight apartments with a variety of layouts, ground-level retail, and below-grade...

Services: [Structural Design](#)

Keywords: [Excavation Support](#), [Podium](#), [Preengineered/Prefabricated/Modular](#), [Residential](#)



Private Residence

Winnetka, IL

Project Contacts: [Scott DiFiore](#), [Matthew Johnson](#)

Constructing this single-family residence required excavating 30 ft down to accommodate two subgrade levels. The excavation extended approximately 100 ft between adjacent lot lines. SGH was the...

Services: [Structural Design](#)

Keywords: [Condition Assessment](#), [Excavation](#), [Excavation Support](#), [Monitoring](#), [Monitoring](#), [Construction](#), [Residential](#)



Private Residence

Winnetka, IL

Project Contacts: [Matthew Johnson](#), [Scott DiFiore](#)

Constructing this single-family residence required excavating 30 ft down to accommodate two subgrade levels. The excavation extended approximately 100 ft between adjacent lot lines. SGH was the...

Services: [Structural Design](#)

Markets: [Residential - Single Family](#)

Keywords: [Condition Assessment](#), [Excavation](#), [Excavation Support](#), [Monitoring](#), [Monitoring](#), [Construction](#), [Residential](#)



288 Pacific

San Francisco, CA

Project Contacts: [Eric Schroter](#), [Travis St. Louis](#), [Jonathan Stafford](#)

Just one block from the Jackson Square Historic District, 288 Pacific incorporates modern residences with an early 1900s masonry structure. The project brings thirty-three condominiums to the...

Services: [Building Enclosure Design](#)

Keywords: Award Winning, Balcony, Below-Ground Waterproofing, Construction Administration, Peer Review, Plaza, Residential, Roofing, Roofing, Low-Sloped, Waterproofing, Window Wall



Philip Johnson Thesis House, 9 Ash Street

Cambridge, MA

Project Contacts: [Matthew Bronski](#), [Matthew Johnson](#)

Designed by Philip Johnson, the house at 9 Ash Street was his Harvard University Graduate School of Design (GSD) thesis project. He studied modularization and used prefabricated wood-framed panels...

Services: [Building Enclosure Rehabilitation](#), [Structural Rehabilitation](#)

Markets: [Cultural](#)

Keywords: [Preservation Technology](#) , [Residential](#), [Roofing](#), [Window Wall](#), [Wood](#)

Vision on Wilshire

Los Angeles, CA

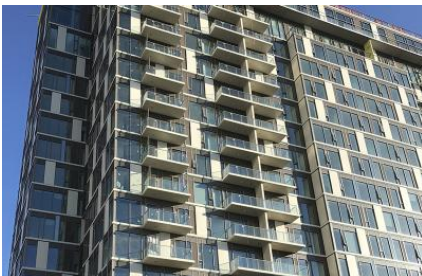
Project Contacts: [Amy Hackney](#)

Located on the corner of Wilshire and Crescent Heights Boulevards, the eighteen-story tower brings more than 150 apartments to the Beverly Grove neighborhood. The complex offers residents two...

Services: [Building Enclosure Design](#)

Markets: [Mixed-Use](#)

Keywords: [Award Winning](#), [Balcony](#), [Below-Ground Waterproofing](#), [High Rise](#), [Multi-Family](#), [Podium](#), [Residential](#), [Retail](#), [Roofing](#), [Walls](#), [Waterproofing](#), [Window Wall](#)





Ascent Midtown

Atlanta, GA

Project Contacts: [Bradford Carpenter](#), [John Karras](#)

Ascent Midtown includes a 328-unit apartment tower and hotel that share a common podium with retail and below-grade parking. The complex offers many amenities, including a fitness center, a pool...

Services: [Building Enclosure Design](#)

Markets: [Mixed-Use](#)

Keywords: [EIFS](#), [Hotel](#), [Masonry-Brick](#), [Podium](#), [Residential](#), [Retail](#), [Roofing](#), [Waterproofing](#)



The Boro

Tysons Corner, VA

Project Contacts: [Bradford Carpenter](#), [John Karras](#)

The first phase of the eighteen-acre development in Tyson's Corner includes four new buildings and a shared podium, which extends two levels below grade. The buildings house 750 apartments, 400,...

Services: [Building Enclosure Design](#)

Markets: [Mixed-Use](#)

Keywords: [Award Winning](#), [Below-Grade](#), [Below-Ground Waterproofing](#), [High Rise](#), [Multi-Family](#), [Podium](#), [Residential](#), [Retail](#), [Roofing](#), [Walls](#), [Waterproofing](#), [Window Wall](#), [Windows](#)



City Market at O, 880 P Street

Washington, DC

Project Contacts: [Bradford Carpenter](#), [John Karras](#)

Constructed in 1881, the O Street Market was one of several public markets in Washington, DC. The project — which encompasses an entire city block — restores the historic market and incorporates...

Services: [Building Enclosure Design](#)

Markets: [Mixed-Use](#)

Keywords: [Award Winning](#), [Balcony](#), [Green Roofs](#), [Masonry-Brick](#), [Residential](#), [Roofing](#), [Waterproofing](#), [Window Wall](#)



EXO

Reston, VA

Project Contacts: [Bradford Carpenter](#), [John Karras](#)

EXO includes two high-rise residential towers with a linking building connecting them. The towers feature one of the nation's largest applications of electrochromic glass, which responds...

Services: [Building Enclosure Design](#)

Markets: [Residential - Apartment](#)

Keywords: [Award Winning](#), [Balcony](#), [Curtain Wall](#), [Glass and Glazing](#), [Green Roofs](#), [High Rise](#), [Plaza](#), [Residential](#), [Roofing](#), [Window Wall](#)



Eleven 40

Chicago, IL

Project Contacts: [Peter Babaian](#), [Emily OKeefe](#)

Topping out at twenty-six stories, Eleven 40 on South Wabash Avenue brings 320 rental apartments to Chicago's South Loop neighborhood. The glass-clad tower sits atop a four-story podium that...

Services: [Building Enclosure Design](#)

Markets: [Mixed-Use](#)

Keywords: [Construction Administration](#), [Curtain Wall](#), [Green Roofs](#), [High Rise](#), [Peer Review](#), [Podium](#), [Residential](#), [Retail](#), [Roofing](#), [Waterproofing](#), [Window Wall](#)



K1 San Diego, 330 13th Street

San Diego, CA

Project Contacts: [Amy Hackney](#)

Adjacent to the city's new central library and just blocks away from Petco Park, K1 at 330 13th Street offers residents a variety of community areas for gathering and relaxing. The building...

Services: [Building Enclosure Design](#)

Markets: [Mixed-Use](#)

Keywords: [Below-Grade](#), [Below-Ground Waterproofing](#), [Construction Administration](#), [Peer Review](#), [Plaster](#), [Podium](#), [Residential](#), [Retail](#), [Walls](#), [Window Wall](#)



The Park Bankers Hill

San Diego, CA

Project Contacts: [Amy Hackney](#), [Kenneth Klein](#)

The Park Bankers Hill is mixed-use property with sixty condominiums and two- and three-story townhouses along the east side facing Balboa Park. Residents enjoy community spaces, such as a club...

Services: [Building Enclosure Design](#)

Markets: [Mixed-Use](#)

Keywords: [Below-Ground Waterproofing](#), [Condominium](#), [High Rise](#), [Residential](#), [Roofing](#), [Waterproofing](#)



Waverly Hall, 115 Mount Auburn Street

Cambridge, MA

Project Contacts: [Derek McCowan](#), [Pedro Sifre](#)

Constructed in the late 1800s, Waverly Hall is part of the Harvard Square Historic District. The owner wanted to renovate the residential building to create modern micro apartments while...

Services: [Building Enclosure Investigation](#), [Building Enclosure Rehabilitation](#), [Structural Design](#)

Markets: [Residential - Apartment](#)

Keywords: [Award Winning](#), [Construction Administration](#), [Historic](#), [Masonry](#), [Masonry-Brick](#), [Preservation Technology](#), [Renovation](#), [Residential](#), [Shear Wall](#), [Structural Strengthening](#), [Windows](#), [Wood](#)



Adaire

Tyson Corner, VA

Project Contacts: [Bradford Carpenter](#), [John Karras](#)

The Adaire brings apartments and retail to the blooming neighborhood around the new Spring Hill Metro station. With its curving geometry and alternating facade panels, the Adaire's tower attracts...

Services: [Building Enclosure Design](#), [Structural Design](#)

Markets: [Mixed-Use](#)

Keywords: [Award Winning](#), [Below-Ground Waterproofing](#), [Code Consulting](#), [Construction Administration](#), [Curtain Wall](#), [Fire Engineering](#), [Peer Review](#), [Podium](#), [Residential](#), [Retail](#), [Roofing](#), [Thermal and Moisture Drive](#), [Waterproofing](#)

Pierce Boston, 188 Brookline Avenue

Boston, MA

Project Contacts: [Joshua Kivela](#)

At its topping out, the 340 ft Pierce Boston became the tallest building in the Fenway neighborhood. The thirty-story tower includes 109 condominiums, 240 apartments, and ground-level retail. The...

Services: [Building Enclosure Design](#)

Markets: [Mixed-Use](#)

Keywords: [Below-Ground Waterproofing](#), [Construction Administration](#), [Curtain Wall](#), [High Rise](#), [Peer Review](#), [Residential](#), [Roofing](#), [Waterproofing](#)



Ascent Uptown, 225 South Poplar Street

Charlotte, NC

Project Contacts: [Bradford Carpenter](#), [John Karras](#)

The Ascent Uptown overlooks Romare Bearden Park and the new minor league ballpark in this developing neighborhood. The 300-unit building offers residents many amenities, including private...

Services: [Building Enclosure Design](#)

Markets: [Mixed-Use](#)

Keywords: [Building Science](#), [Code Compliance](#), [Construction Administration](#)



, Fire Engineering, High Rise, Peer Review, Plaza, Residential
, Retail, Roofing, Waterproofing



Site Double, 2012 Venice Biennale

Venice, Italy

Project Contacts: [Matthew Johnson](#), [Paul Kassabian](#)

Site Double, designed by Milligram-Office and commissioned for the 2012 Venice Biennale, translates the idea of a single-family house in Detroit (near the Architect's studio) to a Venetian gallery...

Services: [Structural Design](#)

Markets: [Cultural](#)

Keywords: [Art Work](#), [Exhibitions/Park Pavilions](#), [Fasteners and Connections](#), [International](#), [Residential](#), [Wood](#)



Horizon House, Third LIXIL International University Architectural Competition

Hokkaido, Japan

Project Contacts: [Matthew Johnson](#), [Paul Kassabian](#)

Designed by students from Harvard's Graduate School of Design with contributions from Hanif Kara, Horizon House was the winning competition entry for the Third LIXIL International University...

Services: [Structural Design](#)

Markets: [Residential - Single Family](#)

Keywords: [Exhibitions/Park Pavilions](#), [Green / Sustainable Design](#), [International](#), [Residential](#), [Wood](#)



Vi at Silverstone

Scottsdale, AZ

Project Contacts: [Peter Babaian](#)

Vi at Silverstone is a multi-building, senior living community featuring condominium-style villas, an apartment-style lodge, and an assisted-living care center. Shortly after occupancy,

residents...

Services: Building Enclosure Investigation

Markets: Residential - Condominium

Keywords: Field Testing, Glass and Glazing, Laboratory Testing and Analysis, Residential, Windows



Homestead Hills Development

Thornton, CO

Project Contacts: [Kevin Moore](#)

The Homestead Hills development comprises 178 one- and two-story, wood-framed homes constructed between 2005 and 2010. Shortly after construction, homeowners reported cracked drywall, displaced...

Services: [Structural Investigation](#)

Markets: [Residential - Single Family](#)

Keywords: [Building Settlement](#), [Cracking](#), [Expert Testimony](#), [Ground \(Soil\) Improvement](#), [Residential](#), [Settlement](#)



Harvard Towers Parking Garage

Cambridge, MA

Project Contacts: [Greggry Cohen](#), [Gustavo Tumialan](#)

Constructed around 1962, Harvard Towers includes a two-level, below-grade parking garage below the ground-level plaza. The intermediate elevated deck in the cast-in-place concrete parking...

Services: [Structural Investigation](#), [Structural Rehabilitation](#)

Markets: [Parking](#)

Keywords: [Award Winning](#), [Concrete](#), [Concrete Rehabilitation](#), [Concrete-Cast-in-Place](#), [Construction Administration](#), [Construction Engineering](#), [Parking Structure](#), [Residential](#), [Shoring/Temporary Structure](#)



Ascent Victory Park, 2588 North Houston Street

Dallas, TX

Project Contacts: [Bradford Carpenter](#), [Nick Floyd](#)

Located in Dallas's Victory Park neighborhood and overlooking the city's basketball arena, the Ascent brings 300 rental units to the community. The twenty-three-story building offers ground-level...

Services: [Building Enclosure Design](#)

Markets: [Residential - Apartment](#)

Keywords: [Air Barrier](#), [Balcony](#), [Curtain Wall](#), [High Rise](#), [Masonry-Brick](#), [Peer Review](#), [Plaza](#), [Residential](#), [Roofing](#), [Waterproofing](#)



Mission 106

Leawood, KS

Project Contacts: [Peter Babaian](#)

Mission 106 is mixed-use complex with 132 apartments, commercial retail space, and many amenities. The 149,000 sq ft building is a wood-framed superstructure constructed over a concrete podium....

Services: [Building Enclosure Investigation](#)

Markets: [Residential - Apartment](#)

Keywords: [Construction Administration](#), [Expert Testimony](#), [Plaza](#), [Podium](#), [Residential](#), [Stucco](#), [Walls](#), [Water Leakage](#), [Waterproofing](#)



30 East Balbo Drive

Chicago, IL

Project Contacts: [Peter Babaian](#)

Targeting college students and young professionals in Chicago's South Loop, 30 East offers 255 bedroom rentals in 134 shared, furnished apartments. A two-story podium with ground-level retail and...

Services: [Building Enclosure Design](#)

Markets: [Mixed-Use](#)

Keywords: Construction Administration, Glass and Glazing, High Rise, Residential, Retail, Window Wall



The Carillon, 185 Massachusetts Avenue

Boston, MA

Project Contacts: [Greggrey Cohen](#), [Paul Millette](#)

As required by the City of Boston, The Carillon's condominium association undertook an inspection of the building's facade. SGH performed the inspection, identifying cracks in the glass fiber-...

Services: [Building Enclosure Rehabilitation](#), [Structural Investigation](#), [Structural Rehabilitation](#)

Markets: [Mixed-Use](#)

Keywords: [Coating](#), [Composites-FRP / CFRP / GFRP](#), [Concrete Rehabilitation](#), [Condominium](#), [Cracking](#), [Facade Inspection](#), [Mockup](#), [Ordinance](#), [Residential](#), [Sealants and Coatings](#), [Water Leakage](#)