



Search Tags: Below-Grade**Project Count:** 30



University of Arizona, Phoenix Biomedical Campus, Health Science Education Building

Phoenix, AZ

Project Contacts: [Delbert Bern](#), [Eric Schroter](#)

The six-story Health Sciences Education Building at the Phoenix Biomedical Campus houses classrooms, lecture halls, offices, and a below-grade research core. The cladding consists of a 45,000 sq...

Services: [Building Enclosure Design](#)

Markets: [Education - College & Prep](#)

Keywords: [Award Winning](#), [Below-Grade](#), [Building Science](#), [Classroom](#), [Curtain Wall](#), [Design-Build](#), [Field Testing](#), [LEED Projects](#), [Metal](#), [Metal-Copper](#), [Preengineered/Prefabricated/Modular](#), [Signature Project](#), [Thermal and Moisture Drive](#)



Storror Drive Interchange/Tunnels

Boston, MA

Project Contacts: [Rosalind Imbaro](#), [Paul Kelley](#), [Atis Liepins](#)

Storror Drive, a parkway along the Charles River in Boston, carries more than 100,000 vehicles per day. The tunnels provide access to city streets, and are constructed of reinforced concrete...

Services: [Materials Rehabilitation](#), [Structural Design](#)

Markets: [Highway & Tunnel](#)

Keywords: [Award Winning](#), [Below-Grade](#), [Bridge](#), [Major Vehicular](#), [Concrete](#), [Construction Administration](#), [Cracking](#), [Emergency Response](#), [Field Testing](#), [Tunnel](#)



The Wilson and The Elm, 7272 Wisconsin Avenue

Bethesda, MD

Project Contacts: [Bradford Carpenter](#), [John Jackson](#)

The mixed-use development at 7272 Wisconsin Avenue includes the Wilson, a twenty-four-story office tower clad in all-glass unitized curtain wall, and the Elm, two thirty-story residential towers...

Services: [Building Enclosure Design](#)

Keywords: [Below-Grade](#), [Below-Ground Waterproofing](#), [Curtain Wall](#), [Green Roofs](#), [LEED Projects](#), [Mockup](#), [Plaza](#), [Podium](#), [Thermal](#)



Ss Nicholas, Constantine & Helen Greek Orthodox Church

Livingston-Roseland, NJ

Project Contacts: [Anindya Dutta](#)

When St. Nicholas of Newark merged with Ss Constantine and Helen of Orange, NJ, they formed Ss Nicholas, Constantine & Helen Greek Orthodox Church. The new parish undertook constructing a new...

Services: [Structural Design](#)

Keywords: [Below-Grade](#), [Classroom](#), [New Construction](#), [Metal-Steel](#), [Religious](#), [School](#)



University of Chicago, Joe and Rika Mansueto Library

Chicago, IL

Project Contacts: [Vince Cammalleri](#)

Balancing the need for more space with a commitment to keeping the growing collection on campus, the University of Chicago undertook constructing a new library building that connects to the...

Services: [Building Enclosure Design](#)

Keywords: [Award Winning](#), [Below-Grade](#), [Below-Ground Waterproofing](#)

, Building Science, Dome, Glass and Glazing, Library, Peer Review, Thermal and Moisture Drive, Waterproofing



Denver Art Museum, North Building

Denver, CO

Project Contacts: [Niklas Vigener](#), [Matthew Worster](#)

Designed by Gio Ponti, the North Building opened in 1971. The castle-like exterior represents the building's function of protecting the museum's artwork. The facade is clad in glass tiles that...

Services: [Building Enclosure Investigation](#), [Building Enclosure Rehabilitation](#)

Keywords: [Below-Grade](#), [Below-Ground Waterproofing](#), [Building Science](#), [Cladding / Recladding](#), [Museum](#), [Roofing](#), [Thermal and Moisture Drive](#), [Windows](#)



Avalon Dogpatch

San Francisco, CA

Project Contacts: [Christopher Decareau](#)

The Avalon Dogpatch development brings three residential buildings to the neighborhood formerly defined by its waterfront commerce and working class residences. The five-story buildings are...

Services: [Building Enclosure Design](#)

Keywords: [Below-Grade](#), [Below-Ground Waterproofing](#), [Construction Administration](#), [Multi-Family](#), [Peer Review](#), [Plaza](#), [Podium](#), [Residential](#), [Roofing](#), [Walls](#), [Waterproofing](#)



Boston Children's Hospital, Hale Building

Boston, MA

Project Contacts: [Joshua Kivela](#)

Boston Children's Hospital wanted a new clinical building that would incorporate the latest healthcare programming and technology. The building, with 150 patient rooms and 16 operating rooms,...

Services: [Building Enclosure Design](#)

Keywords: Adjacent Construction, Below-Grade, Below-Ground Waterproofing, Building Enclosure Commissioning, Commissioning, Curtain Wall, Hospital, Peer Review, Thermal and Moisture Drive



University of Virginia, University Hospital

Charlottesville, VA

Project Contacts: Philip Frederick, Nicholas Piteo, Niklas Vigener

To serve its growing community, the University Hospital needed to expand. The University of Virginia (UVA) wanted to renovate the existing hospital and construct a new addition on the site of an...

Services: Building Enclosure Design

Markets: Health Care

Keywords: Addition, Award Winning, Below-Grade, Below-Ground Waterproofing, Curtain Wall, Hospital, Peer Review, Thermal and Moisture Drive



The Boro

Tysons Corner, VA

Project Contacts: Bradford Carpenter, John Karras

The first phase of the eighteen-acre development in Tyson's Corner includes four new buildings and a shared podium, which extends two levels below grade. The buildings house 750 apartments, 400,...

Services: Building Enclosure Design

Markets: Mixed-Use

Keywords: Award Winning, Below-Grade, Below-Ground Waterproofing, High Rise, Multi-Family, Podium, Residential, Retail, Roofing, Walls, Waterproofing, Window Wall, Windows



Harvard Kennedy School

Cambridge, MA

Project Contacts: [Jeffry Ceruti](#)

Harvard Kennedy School was looking to reinvent the campus and undertook a major project to add new flexible classrooms and collaboration areas, improve connectivity between the existing buildings...

Services: [Building Enclosure Design](#)

Markets: [Education - College & Prep](#)

Keywords: [Addition](#), [Additions-In-fill](#), [Below-Grade](#), [Below-Ground Waterproofing](#), [Curtain Wall](#), [Plaza](#)



K1 San Diego, 330 13th Street

San Diego, CA

Project Contacts: [Amy Hackney](#)

Adjacent to the city's new central library and just blocks away from Petco Park, K1 at 330 13th Street offers residents a variety of community areas for gathering and relaxing. The building...

Services: [Building Enclosure Design](#)

Markets: [Mixed-Use](#)

Keywords: [Below-Grade](#), [Below-Ground Waterproofing](#), [Construction Administration](#), [Peer Review](#), [Plaster](#), [Podium](#), [Residential](#), [Retail](#), [Walls](#), [Window Wall](#)



CityCenterDC

Washington, DC

Project Contacts: [Bradford Carpenter](#)

CityCenterDC, designed by Foster + Partners and Shalom Baranes Associates, is a 2.5 million sq ft, mixed-use development sited at the former location of the convention center in downtown...

Services: [Building Enclosure Design](#)

Markets: [Mixed-Use](#)

Keywords: [Award Winning](#), [Below-Grade](#), [Condominium](#), [Curtain Wall](#), [Glass and Glazing](#), [Green / Sustainable Design](#), [Green Roofs](#), [Masonry](#), [Masonry-Terra Cotta](#), [Office](#), [Parking Structure](#)



University of the District of Columbia

Washington, DC

Project Contacts: Joseph Rogers, Niklas Vigener

The University of the District of Columbia wanted to renovate the Theater of the Arts building and address ongoing leakage at the same time. The theater building adjoins and lies partially beneath...

Services: Building Enclosure Investigation, Building Enclosure Rehabilitation, Structural Investigation, Structural Rehabilitation

Markets: Education - College & Prep

Keywords: Below-Grade, Concrete Rehabilitation, Plaza, Theater/Performing Arts, Water Leakage, Waterproofing



John R. Oishei Children's Hospital

Buffalo, NY

Project Contacts: Peter Babaian, Pedro Sifre

The 185-bed John R. Oishei Children's Hospital replaces the city's 125-year-old Women and Children's Hospital of Buffalo. With a focus on patient and family comfort, the new 440,000 sq ft hospital...

Services: Building Enclosure Design, Structural Design

Markets: Health Care

Keywords: Award Winning, Below-Grade, Below-Ground Waterproofing, Braced Frame, Bridge, Pedestrian, Frame Moment, Metal-Steel, Revit/BIM, Truss, Tunnel



Government Center Station

Boston, MA

Project Contacts: Rosalind Imbaro

Although the station was modified many times since opening in 1898, Government Center Station lacked accessibility. The Improvements Project includes installing new elevators from

the surface to...

Services: Structural Design

Markets: Transportation

Keywords: Below-Grade, Construction Consulting, Construction Engineering, Construction Staging, Metal-Steel, Shoring/Temporary Structure



Johns Hopkins University, Krieger Hall

Baltimore, MD

Project Contacts: Joseph Rogers, Scott Silvester, Bryan Strohman, Niklas Vigener

Constructed in 1929, historic Krieger Hall sits on the Keyser Quadrangle at Johns Hopkins University (JHU). It connects to Ames Hall through a vestibule and colonnade walkway to the west and...

Services: Building Enclosure Investigation, Building Enclosure Rehabilitation, Structural Investigation, Structural Rehabilitation

Markets: Education - College & Prep

Keywords: Award Winning, Below-Grade, Below-Ground Waterproofing, Civil, Drainage, Excavation Support, Foundation, Geotechnical, Masonry-Brick, Plaza, Preservation Technology, Structural Strengthening, Water Leakage, Waterproofing

350 Bush Street

San Francisco, CA

Project Contacts: Craig Allender, Kenneth Klein, Carolyn Searls, Taryn Williams

The development at 350 Bush Street incorporates the existing 1920s Mining Exchange with a nineteen-story, glass-clad tower and a five-story, mixed-use building. The complex offers tenants outdoor...

Services: Building Enclosure Design, Building Enclosure Rehabilitation

Markets: Office



Keywords: Award Winning, Below-Grade, Facadism, Masonry-Terra Cotta, Office, Plaza, Preservation Technology , Retail, Roofing, Structural Strengthening, Waterproofing



Atlantic (formerly Russia) Wharf

Boston, MA

Project Contacts: [Michael Louis](#)

Atlantic Wharf (formerly Russia Wharf) combines residential, retail, and office space in one Fort Point Channel location. The project involved integrating three historic, low-rise buildings with a...

Services: [Building Enclosure Design](#)

Markets: [Mixed-Use](#)

Keywords: [Below-Grade](#), [Below-Ground Waterproofing](#), [Cladding / Recladding](#), [Curtain Wall](#), [Facadism](#), [High Rise](#), [Historic](#), [LEED Projects](#), [Office](#), [Plaza](#), [Skylight](#), [Walls](#), [Waterproofing](#)



Westlight at 1111 24th Street NW

Washington, DC

Project Contacts: [Jeffrey Kerr](#)

The mayor selected EastBanc's team to lead the West End's revitalization and redevelopment of the neighborhood's library, police special operations building, and fire station. The development...

Services: [Building Enclosure Design](#)

Markets: [Mixed-Use](#)

Keywords: [Below-Grade](#), [Below-Ground Waterproofing](#), [Condominium](#), [Construction Administration](#), [Curtain Wall](#), [Green Roofs](#), [Library](#), [Peer Review](#), [Residential](#), [Roofing](#), [Roofing](#), [Low-Sloped](#), [Roofing](#), [Vegetative](#), [Waterproofing](#), [Window Wall](#)



135 Franklin Street

Stoneham, MA

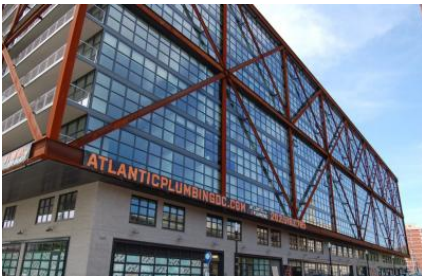
Project Contacts: [Cory Brett](#), [Scott DiFiore](#), [Bryan Strohan](#)

The five-story building at 135 Franklin Street experienced damage due to settlement. Over the years, the owner undertook repairs at the elevator pit and central corridors and needed to address...

Services: [Structural Investigation](#), [Structural Rehabilitation](#)

Markets: [Residential - Condominium](#)

Keywords: [Below-Grade](#), [Building Settlement](#), [Foundation](#), [Geotechnical](#), [Settlement](#), [Slab](#)



Atlantic Plumbing

Washington, DC

Project Contacts: [Bradford Carpenter](#), [Philip Frederick](#)

Constructed on the site of former plumbing supply warehouse, Atlantic Plumbing is a 310-unit, mixed-use apartment building and shares the site with an adjacent condominium building, 2030AP....

Services: [Building Enclosure Design](#)

Markets: [Mixed-Use](#)

Keywords: [Below-Grade](#), [Peer Review](#), [Residential](#), [Retail](#), [Roofing](#), [Waterproofing](#), [Window Wall](#)



2030AP at 2030 8th Street NW

Washington, DC

Project Contacts: [Bradford Carpenter](#), [Philip Frederick](#)

Constructed on the site of a former plumbing supply warehouse, 2030AP includes sixty-two condominiums over ground-level retail space and below-grade parking. 2030AP shares the site with the...

Services: [Building Enclosure Design](#)

Markets: [Mixed-Use](#)

Keywords: [Balcony](#), [Below-Grade](#), [Peer Review](#), [Residential](#), [Retail](#), [Roofing](#), [Waterproofing](#), [Window Wall](#)



Bowie State University, Center for Natural Sciences, Mathematics, and Nursing

Bowie, MD

Project Contacts: [Jeffrey Kerr](#), [Niklas Vigener](#)

Bowie State University wanted a new home for their STEM and nursing department that would engage students, promote collaboration, and offer program flexibility. Primarily clad in curtain wall and...

Services: [Building Enclosure Design](#)

Markets: [Education - College & Prep](#)

Keywords: [Award Winning](#), [Below-Grade](#), [Below-Ground Waterproofing](#), [Construction Administration](#), [Curtain Wall](#), [Mockup](#), [Roofing](#), [Skylight](#)



Twenty|20 at 20 Child Street

Cambridge, MA

Project Contacts: [Joshua Kivela](#), [Michael Louis](#)

Leading the development at East Cambridge's NorthPoint site, Twenty|20 brings 355 apartment units to the growing neighborhood. The building also offers 8,600 sq ft of retail space and numerous...

Services: [Building Enclosure Design](#)

Markets: [Mixed-Use](#)

Keywords: [Below-Grade](#), [Below-Ground Waterproofing](#), [Curtain Wall](#), [Mockup](#), [Plaza](#), [Residential](#), [Roofing](#), [Walls](#), [Windows](#)



Austin Central Library

Austin, TX

Project Contacts: [Peter Babaian](#)

The Austin Public Library wanted a more modern facility focusing on electronic information and serving as a community gathering space. The 198,000 sq ft building features a six-story atrium filled...

Services: [Building Enclosure Design](#)

Markets: Government

Keywords: Air Barrier, Award Winning, Balcony, Below-Grade, Below-Ground Waterproofing, Library, Waterproofing



Crossing 900

Redwood City, CA

Project Contacts: [Kenneth Klein](#), [James Mendygral](#)

Adjacent to the Redwood City Caltrain station, Crossing 900 includes two mid-rise office buildings sharing a landscaped podium over retail space and below-grade parking. The Level 4 podium...

Services: [Building Enclosure Design](#)

Markets: [Mixed-Use](#)

Keywords: [Below-Grade](#), [Below-Ground Waterproofing](#), [Construction Administration](#), [Office](#), [Podium](#), [Retail](#), [Roofing](#), [Seismic Isolation](#), [Waterproofing](#)



Residence Inn Back Bay-Fenway

Boston, MA

Project Contacts: [Vince Cammalleri](#), [Jason Der Ananian](#)

Located near Fenway Park and Kenmore Square, Residence Inn Back Bay-Fenway is a 175-room, extended-stay hotel. The 117,000 sq ft, eight-story building includes below-grade parking, ground-floor...

Services: [Building Enclosure Design](#)

Markets: [Hospitality](#)

Keywords: [Balcony](#), [Below-Grade](#), [Below-Ground Waterproofing](#), [Building Science](#), [Construction Administration](#), [Curtain Wall](#), [Field Testing](#), [Peer Review](#), [Plaza](#), [Roofing](#), [Thermal and Moisture Drive](#), [Walls and Fenestration](#)



Great Wolf Lodge

Garden Grove, CA

Project Contacts: [Delbert Bern](#), [Judson Taylor](#)

As California's first indoor water park in the Anaheim area, the twelve-acre Great Wolf Lodge resort offers more than 600 hotel rooms, a three-acre indoor/outdoor water park, conference space,...

Services: [Building Enclosure Design](#)

Markets: [Sports & Entertainment](#)

Keywords: [Award Winning](#), [Below-Grade](#), [Below-Ground Waterproofing](#), [EIFS](#), [Mockup](#), [Peer Review](#), [Roofing](#), [Thermal and Moisture Drive](#), [Walls](#)



University of California, Lower Sproul Redevelopment

Berkeley, CA

Project Contacts: [Amy Hackney](#)

The University of California wanted to revitalize the Lower Sproul area, which houses their student union complex. The redevelopment project includes demolishing and replacing Eshleman Hall and...

Services: [Building Enclosure Design](#)

Markets: [Education - College & Prep](#)

Keywords: [Award Winning](#), [Below-Grade](#), [Below-Ground Waterproofing](#), [Construction Administration](#), [Inspection](#), [Mockup](#), [Plaza](#), [Renovation](#), [Roofing](#), [Roofing](#), [Low-Sloped](#), [Walls](#), [Walls and Fenestration](#)