



Search Tags: International

Project Count: 22



Bahá'í House of Worship of South America

Santiago, Chile

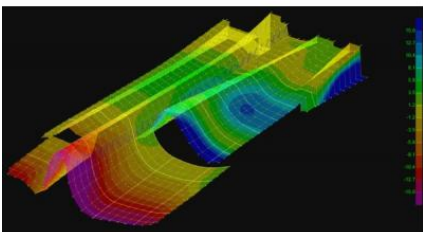
Project Contacts: [Amy Hackney](#), [James Parker](#)

Designed by Siamak Hariri of Hariri Pontarini Architects, the Chile Baha'i House of Worship sits on a hillside set against the Andes Mountains. At nearly 100 ft high, the temple features nine...

Services: [Building Enclosure Design](#), [Materials Design](#), [Structural Design](#)

Markets: [Religious](#)

Keywords: [Award Winning](#), [Base Isolation](#), [Glass and Glazing](#), [High-Performance/Advanced Enclosures](#), [International](#), [Laboratory Testing and Analysis](#), [Materials Analysis](#), [Materials Testing for Design](#), [Religious](#), [Seismic Isolation](#), [Signature Project](#), [Spaceframe/Shell Structure](#), [Stone](#), [Structural Glass](#)



China Pavilion Expo Milano 2015

Milan, Italy

Project Contacts: [Matthew Johnson](#)

Expanding on Expo Milano 2015's theme, Feeding the Planet ? Energy for Life, China Pavilion focuses on sustainability and coexistence of nature and city. The undulating roof structure appears to...

Services: [Structural Design](#), [Building Enclosure Design](#)

Markets: [Cultural](#)

Keywords: [Award Winning](#), [BIM](#), [Digital Fabrication](#), [Heavy Timber](#), [International](#), [Long-Span Structure](#), [Metal-Steel](#), [Wood](#)



Minera Escondida, Organic Growth Project 1, Tunnel 4

Atacama Desert, Chile

Project Contacts: [Jesse Beaver](#)

Expansion of the Minera Escondida copper mine included constructing a corrugated steel structural plate arch tunnel. The tunnel acts as a buried bridge to carry a haul road over the mine?s...

Services: [Structural Investigation](#), [Structural Rehabilitation](#)

Markets: [Highway & Tunnel](#)

Keywords: [Buried](#), [Condition Assessment](#), [Culverts and Storm Drains](#), [Damage](#), [Finite Element Analysis](#), [International](#), [Metal](#), [Metal-Steel](#), [Pipe](#), [Pipe](#), [Steel](#), [Pipeline](#), [Settlement](#), [Structural Adequacy Assessment](#), [Tunnel](#)



ClassAct Schools

Philippines

Project Contacts: [Paul Kassabian](#), [Paul Kelley](#)

In October 2013, the Philippines experienced a large (magnitude 7.2) earthquake and major typhoon in a span of three weeks. These events caused significant damage throughout the island chain. As...

Services: [Materials Design](#), [Structural Design](#)

Markets: [Education - K-12](#)

Keywords: [Fasteners and Connections](#), [International](#), [Laboratory Testing and Analysis](#), [Material-Related](#), [School](#), [Truss](#), [Wood](#)



Site Double, 2012 Venice Biennale

Venice, Italy

Project Contacts: [Matthew Johnson](#), [Paul Kassabian](#)

Site Double, designed by Milligram-Office and commissioned for the 2012 Venice Biennale, translates the idea of a single-family house in Detroit (near the Architect's studio) to a Venetian gallery...

Services: [Structural Design](#)

Markets: [Cultural](#)

Keywords: [Art Work](#), [Exhibitions/Park Pavilions](#), [Fasteners and Connections](#), [International](#), [Residential](#), [Wood](#)



Horizon House, Third LIXIL International University Architectural Competition

Hokkaido, Japan

Project Contacts: [Matthew Johnson](#), [Paul Kassabian](#)

Designed by students from Harvard's Graduate School of Design with contributions from Hanif Kara, Horizon House was the winning competition entry for the Third LIXIL International University...

Services: [Structural Design](#)

Markets: [Residential - Single Family](#)

Keywords: [Exhibitions/Park Pavilions](#), [Green / Sustainable Design](#), [International](#), [Residential](#), [Wood](#)



Nablus Sports Arena

Nablus, West Bank, Palestine

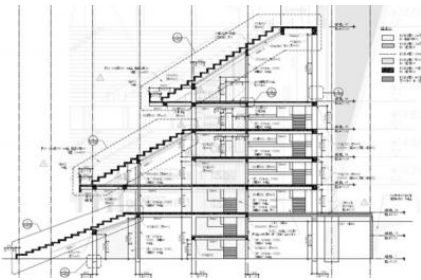
Project Contacts: [Terrence McDonnell](#)

The Nablus Sports Arena, sponsored in part by USAID, is a multi-sport and fitness complex planned for Nablus residents and area sports clubs. The arena was designed to include a 1700-seat...

Services: [Building Enclosure Design](#), [Structural Design](#)

Markets: [Sports & Entertainment](#)

Keywords: [Arena/Stadium](#), [Concrete](#), [International](#), [Long-Span Structure](#), [Metal-Steel](#), [Peer Review](#), [Seismic Analyses](#), [Walls](#)



Rafi Cricket Stadium

Bahria Town Karachi, Pakistan

Project Contacts: [Sal Capobianco](#)

Located within the planned community of Bahria Town Karachi, Bahria Sports City will offer its residents numerous sport and fitness facilities. One of the city's features will be a new cricket...

Services: [Structural Design](#)

Markets: [Sports & Entertainment](#)

Keywords: [Arena/Stadium](#), [Concrete](#), [Concrete-Precast](#), [International](#)



Huachipa Water Treatment Plant

Lima, Peru

Project Contacts: [Jesse Beaver](#), [Phillip Sharff](#)

Ramal Norte Pipeline is a 27 km long subsurface pressure pipeline that provides drinking water from Huachipa Water Treatment Plant to several districts in Lima, Peru. The pipeline was in temporary...

Services: [Materials Investigation](#), [Structural Investigation](#)

Markets: [Water/Wastewater](#)

Keywords: [Failure Investigation](#), [Failure Risk Assessment](#), [Finite Element Analysis](#), [International](#), [Pipe](#), [Pipeline](#), [Soil-Structure Interaction](#)



2014 Solar Decathlon Techstyle Haus

Providence, RI and Versailles, France

Project Contacts: [Matthew Johnson](#), [Paul Kassabian](#), [James Parker](#)

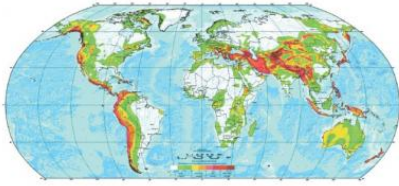
Designed by a joint team of students from Rhode Island School of Design (RISD) and Brown University, this "passivhaus" entry for the 2014 Solar Decathlon competition balances the use of new...

Services: [Structural Design](#)

Markets: [Residential - Single Family](#)

Keywords: [Green / Sustainable Design](#), [International](#), [Nonlinear](#), [Renewable Energy: Photovoltaics](#)

GLOBAL SEISMIC HAZARD MAP



Procter & Gamble Company, Worldwide Seismic Mitigation Program

Project Contacts: James Parker

Following the 1994 Northridge and 1995 Kobe earthquakes, Procter & Gamble Company (P&G) initiated a program for seismic risk mitigation of its owned and leased facilities worldwide. The...

Services: Structural Rehabilitation

Markets: Manufacturing & Industrial

Keywords: International, Laboratory, Office, Seismic Engineering and Retrofit, Term Contracts and IDIQs



KORI Unit 3 Nuclear Power Plant, Periodic Safety Review Seismic Qualification

Seoul, South Korea

Project Contacts: Gregory Hardy, Kyuho Hwang, Wen-How Tong

Kori Unit 3 is a 900 MW pressurized water reactor that has been in service since 1985. All operating nuclear power plants in Korea are required to perform a Periodic Safety Review (PSR) every ten...

Services: Structural Investigation

Markets: Nuclear

Keywords: International, Power, Seismic Walkdown



Thule Air Base (THU)

DASR Building, Greenland

Project Contacts: [Cory Brett](#), [Scott DiFiore](#), [Dominic Kelly](#)

Several logistical challenges complicated the design and construction of a radar facility that comprises a tower and an equipment support building at a remote U.S. air base 900 mi inside the...

Services: [Structural Design](#)

Markets: [Science & Defense](#)

Keywords: [Concrete](#), [Concrete-Precast](#), [Extreme Environments/Structures](#), [Fire](#), [Fire Protection](#), [Foundation](#), [Geotechnical](#), [International](#), [Preengineered/Prefabricated/Modular](#), [Slab](#)



R.O. Pickard Environmental Centre Expansion (ROPEC)

Ottawa, ON

Project Contacts: [Atis Liepins](#)

For the R.O. Pickard Environmental Centre digester expansion program, the owner's engineer envisioned two structurally-identical, modified, egg-shaped digesters founded on drilled piers extending...

Services: [Structural Design](#)

Markets: [Water/Wastewater](#)

Keywords: [Concrete](#), [Concrete-Post-tensioned](#), [Concrete-Prestressed](#), [Concrete-Reinforced](#), [Finite Element Analysis](#), [International](#), [Pile](#), [Seismic Engineering and Retrofit](#), [Tank](#)



Seismic Assessment of Pipelines

Canada

Project Contacts: [Mehdi Zarghamee](#)

Prestressed concrete cylinder pipes (PCCP) are extensively used in the cooling system of power plants. SGH evaluated the seismic performance of buried PCCP pipelines in low, moderate, and high...

Services: [Structural Design](#)

Markets: [Water/Wastewater](#)

Keywords: [Engineering Mechanics](#), [International](#), [PCCP](#), [Pipe](#), [Pipeline](#), [Seismic Analyses](#)



Mühleberg Nuclear Power Plant

Mühleberg, Switzerland

Project Contacts: [Philip Hashimoto](#)

The 1,097 MW power plant went into commercial operation in 1971 and consists of a single-unit boiling water reactor. The owner/operator of the Mühleberg Nuclear Power Plant (KKM) needed to submit...

Services: [Structural Investigation](#)

Markets: [Nuclear](#)

Keywords: [International](#), [Nonlinear](#), [Nuclear Facility](#), [Seismic Probabilistic Risk Assessment \(PRA\)](#), [Seismic Walkdown](#), [Soil-Structure Interaction](#)



Sowwah Square Hotel, Rosewood Abu Dhabi, Al Sowwah Island

Abu Dhabi, United Arab Emirates

Project Contacts: [Amy Hackney](#)

The swanky Rosewood Abu Dhabi was the first hotel to open on Al Maryah Island, which is an expansive mixed-use development anticipated to be the capital's new business district. Inspired by the...

Services: [Building Enclosure Design](#)

Markets: [Hospitality](#)

Keywords: [Below-Grade](#), [Below-Ground Waterproofing](#), [New Construction](#), [Curtain Wall](#), [High Rise](#), [Hotel](#), [International](#), [Peer Review](#), [Residential](#), [Signature Project](#), [Waterproofing](#)



Dortoir Familial

Ramatuelle, France

Project Contacts: [Matthew Johnson](#)

Located in the south of France and overlooking the Mediterranean Ocean, this contemporary private residence is approximately 5,000 sq ft. The home comprises two opposing, L-shaped buildings that...

Services: [Building Enclosure Design](#), [Structural Design](#)

Markets: [Residential - Single Family](#)

Keywords: [Award Winning](#), [Concrete](#), [International](#), [Residential](#)



CNRL Supermodules, Horizon Oil Sands Delayed Coker Unit Expansion, Fort McMurray

Alberta, AB

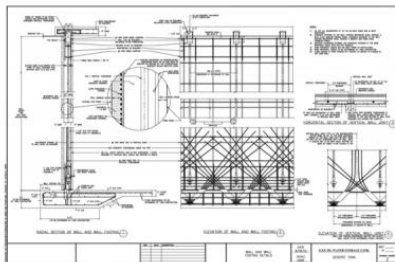
Project Contacts: [Dominic Kelly](#)

With modular construction, CNRL was able to expand the Delayed Coker Unit at their Horizon Oil Sands site while minimizing downtime during construction. The project utilized supermodule structures...

Services: [Structural Design](#)

Markets: [Oil & Gas](#)

Keywords: [Construction Consulting](#), [International](#), [Preengineered/Prefabricated/Modular](#), [Shoring/Temporary Structure](#)



Tank Service Life Estimate

Middle East, Saudi Arabia

Project Contacts: [Dominic Kelly](#)

The tank, classified as an American Water Works Association (AWWA) D-110 Type I tank, is a strand-wound circular, prestressed concrete water tank with cast-in-place concrete tank walls clad in...

Services: [Structural Design](#)

Markets: [Water/Wastewater](#)

Keywords: [Concrete](#), [Concrete-Post-tensioned](#), [International](#), [Tank](#)



Tocumen International Airport

Panama City, Panama

Project Contacts: [Anindya Dutta](#), [Ronald Hamburger](#)

The new South Terminal Building at Tocumen International Airport is 666 m long, 25 m high, encloses 75,000 m² of space, and is separated into five zones by seismic joints. Zone 3 is a triangle...

Services: [Structural Design](#)

Markets: [Airport](#)

Keywords: [Airport](#), [Frame](#), [Special Moment](#), [International](#), [Long-Span Structure](#), [Nonlinear](#), [Seismic Engineering and Retrofit](#), [Shear Wall](#)



American National Exhibition

Moscow, Russia

SGH collaborated with MIT in 1959 on the design of the American National Exhibition in Moscow. SGH's structural design takes advantage of the characteristics of the plastic material to achieve a...

Services: [Materials Design](#), [Structural Design](#)

Markets: [Cultural](#)

Keywords: [Exhibitions/Park Pavilions](#), [International](#), [Plastic/Composite](#), [Signature Project](#)

