



Search Tags: Industrial Rope Access

Project Count: 16



New York State Capitol Building

Albany, NY

Project Contacts: [Susan Knack-Brown](#), [Niklas Vigener](#)

The New York State Capitol was designed by a succession of architects, including H.H. Richardson and Leopold Eidlitz. Constructed in stages between 1870 and 1900, the building features Second...

Service: [Building Enclosure Investigation](#), [Building Enclosure Rehabilitation](#)

Market: [Government](#)

Keywords: [Award Winning](#), [Condition Assessment](#), [Construction Administration](#), [Historic](#), [Industrial Rope Access](#), [Masonry](#), [Masonry-Terra Cotta](#), [Metal](#), [Metal-Copper](#), [National Register of Historic Places](#), [Preservation Technology](#), [Roofing](#), [Skylight](#), [Stair](#), [Stone-Granite](#), [Stone-Slate](#), [Water Leakage](#)



Stanley Mosk Library and Courts Building

Sacramento, CA

Project Contacts: [Carolyn Searls](#), [Matthew Worster](#)

Completed in 1929, the Stanley Mosk Library and Courts Building is part of the Capitol Extension Group listed on the National Register of Historic Places and is a California Historical Landmark....

Service: [Building Enclosure Rehabilitation](#), [Structural Rehabilitation](#)

Market: [Government](#)

Keywords: [Award Winning](#), [Courthouse](#), [Industrial Rope Access](#), [Library](#), [Masonry-Terra Cotta](#), [Preservation Technology](#), [Stone](#), [Stone-Granite](#)



Symphony Hall

Boston, MA

Project Contacts: [Susan Knack-Brown](#), [Dean Rutila](#)

Designed by McKim, Mead & White, Symphony Hall opened in 1900. The auditorium, a National Historic Landmark, is home to the Boston Symphony Orchestra (BSO). The BSO hired SGH to investigate...

Service: [Building Enclosure Investigation](#), [Building Enclosure Rehabilitation](#)

Market: [Sports & Entertainment](#)

Keywords: [Award Winning](#), [Chimney/Stack](#), [Industrial Rope Access](#), [Masonry-Brick](#), [Sport/Entertainment](#), [Stone-Granite](#), [Stone-Limestone](#), [Theater/Performing Arts](#), [Windows](#)



Connecticut State Capitol, Genius of Connecticut

Hartford, CT

Project Contacts: [Susan Knack-Brown](#), [Matthew Sherman](#)

The Genius of Connecticut, a statue designed by Randolph Rogers, stood atop the Capitol from 1878 until 1938 when it was damaged during a hurricane. The governor then donated the statue to the...

Service: [Structural Investigation](#)

Market: [Government](#)

Keywords: [Condition Assessment](#), [Feasibility Study](#), [Historic](#), [Industrial Rope Access](#), [Monumental Buildings](#), [Nondestructive Testing](#), [Preservation Technology](#)



University of Massachusetts Memorial Medical Center

Worcester, MA

Project Contacts: [Dean Rutila](#)

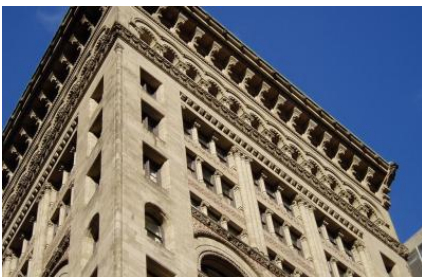
The granite-clad Medical Center building, built in the 1970s, is nine stories tall. The building houses the university teaching hospital, the medical school, and clinical research laboratories.

...

Service: [Building Enclosure Rehabilitation](#), [Materials Investigation](#), [Structural Design](#)

Market: [Health Care](#)

Keywords: [Adhesives, Sealants, and Coatings](#), [Cladding / Recladding](#), [Construction Administration](#), [Fasteners and Connections](#), [Industrial Rope Access](#), [Masonry](#), [Signature Project](#), [Stone-Granite](#), [Walls](#)



Ames Building

Boston, MA

Project Contacts: [Joseph Zona](#)

At fourteen stories and 185 ft to the parapet, the historic Ames Building is one of the tallest load-bearing masonry buildings in the United States. The Richardsonian Romanesque building, designed...

Service: [Building Enclosure Rehabilitation](#), [Structural Rehabilitation](#)

Market: [Hospitality](#)

Keywords: [Adaptive Reuse](#), [Award Winning](#), [Facade Inspection](#), [High Rise](#), [Industrial Rope Access](#), [National Register of Historic Places](#), [Stone-Granite](#), [Structural Strengthening](#)



225 Bush Street

San Francisco, CA

Project Contacts: [Carolyn Searls](#)

Constructed in 1922 with a major addition in 1950, the twenty-two story building 225 Bush Street is a twenty-two story building located in the central downtown business district. The building is...

Service: [Building Enclosure Rehabilitation](#)

Market: [Office](#)

Keywords: [Facade Inspection](#), [Historic](#), [Industrial Rope Access](#), [Masonry](#), [Masonry-Brick](#), [Masonry-Terra Cotta](#), [National Register of Historic Places](#), [Preservation Technology](#), [Roofing](#), [Clay Tile](#), [Stone-Granite](#), [Walls](#)



222 Sutter Street

San Francisco, CA

Project Contacts: [Carolyn Searls](#)

Featuring Gothic and Renaissance elements with a contemporary flare, the ten-story building exemplifies the character of downtown San Francisco after the 1906 earthquake. The building, which once...

Service: [Building Enclosure Investigation](#), [Building Enclosure Rehabilitation](#)

Market: [Office](#)

Keywords: [Corrosion](#), [Cracking](#), [Due Diligence](#), [Facade Inspection](#), [Field Testing](#), [Industrial Rope Access](#), [Masonry](#), [Masonry-Terra Cotta](#), [Masonry-Transitional](#), [Water Leakage](#), [Windows](#)



Luzerne County Courthouse

Wilkes-Barre, PA

Project Contacts: [Thomas Schwartz](#), [Niklas Vigener](#)

For years, the Classic Revival courthouse was plagued by damaged interior finishes from water leaks and deteriorating exterior sandstone facades. After limited restoration campaigns addressed...

Service: [Building Enclosure Investigation](#), [Building Enclosure Rehabilitation](#)

Market: [Government](#)

Keywords: [Courthouse](#), [Dome](#), [Historic](#), [Industrial Rope Access](#), [Masonry](#), [National Register of Historic Places](#), [Plaster](#), [Preservation Technology](#) , [Skylight](#)



City of Boston Facade Inspection Ordinance

Boston, MA

Project Contacts: [Nick Floyd](#), [Scott Tomlinson](#)

The City of Boston requires the inspection of exterior walls and appurtenances of buildings as described in Ordinance 9-9.12 of the City of Boston Municipal Code. SGH performs ordinance-compliant...

Service: [Building Enclosure Investigation](#)

Keywords: [Code Compliance](#), [Condition Assessment-Multi-Building](#), [Facade Inspection](#), [Industrial Rope Access](#), [Ordinance](#)



State University of New York, Plaza Building

Albany, NY

Project Contacts: [Susan Knack-Brown](#)

The SUNY Plaza Building, a historic Gothic-style building listed on the National Register of Historic Places, was originally constructed as the headquarters for the Delaware and Hudson Railroad...

Service: [Building Enclosure Rehabilitation](#)

Market: [Education - College & Prep](#)

Keywords: [Condition Assessment](#), [Industrial Rope Access](#), [Masonry](#), [Masonry-Terra Cotta](#), [Masonry-Transitional](#), [Preservation Technology](#) , [Stone-Granite](#), [Stone-Slate](#)



Cornell University, Veterinary Research Tower

Ithaca, NY

Project Contacts: [Susan Knack-Brown](#), [Peter Nelson](#)

The Veterinary Research Tower is a nine-story structure that was built in the 1970s, and is clad with brick veneer and curtain walls. The walls were constructed without insulation or air barriers...

Service: [Building Enclosure Investigation](#)

Market: [Education - College & Prep](#)

Keywords: [Condition Assessment](#), [Curtain Wall](#), [Facade Inspection](#), [High Rise](#), [Industrial Rope Access](#), [Laboratory](#), [Masonry](#), [Masonry-Brick](#)



Albany City Hall Tower Study

Albany, NY

Project Contacts: [Nick Floyd](#), [Susan Knack-Brown](#)

Albany City Hall was designed by H.H. Richardson and constructed between 1881 and 1883. The building has exterior mass masonry walls of Milford granite and East Longmeadow brownstone trim and...

Service: [Building Enclosure Investigation](#), [Materials Investigation](#)

Market: [Government](#)

Keywords: [Condition Assessment](#), [Field Testing](#), [Historic](#), [Industrial Rope Access](#), [Laboratory Testing and Analysis](#), [Masonry](#), [National Register of Historic Places](#), [Petrography](#), [Preservation Technology](#) , [Water Leakage](#)



G. Fox Building

Hartford, CT

Project Contacts: [Stephen Ruggiero](#)

The historic G. Fox building, constructed circa 1917 and designed by Cass Gilbert, was the first of six buildings rehabilitated and redeveloped under the State of Connecticut's "Six Pillars of..."

Service: [Building Enclosure Investigation](#)

Market: [Office](#)

Keywords: [Facade Inspection](#), [Glass and Glazing](#), [Historic](#), [Industrial Rope Access](#), [Inspection](#), [Masonry](#), [Masonry-Brick](#), [Masonry-Terra Cotta](#), [National Register of Historic Places](#), [Preservation Technology](#) , [Roofing](#), [Stone-Limestone](#), [Windows](#)



John Adams Courthouse

Boston, MA

Project Contacts: Jeffry Ceruti

Previously known as the Old Suffolk County Courthouse, the John Adams Courthouse was constructed in two building campaigns, 1895 and 1906-1909. The building, listed on the National Register of...

Service: Building Enclosure Rehabilitation

Market: Government

Keywords: Award Winning, Condition Assessment, Construction Administration, Courthouse, Historic, Industrial Rope Access, Masonry, National Register of Historic Places, Preservation Technology, Roofing, Steep-Sloped, Stone-Granite, Stone-Slate, Water Leakage



The First Church of Christ, Scientist

Boston, MA

Project Contacts: Susan Knack-Brown, Matthew Sherman

In the late 1960s, The First Church of Christ, Scientist (TFCCS) retained I.M. Pei & Partners and Araldo Cossutta, Associated Architects to design the fourteen-acre Christian Science Plaza...

Service: Building Enclosure Investigation, Building Enclosure Rehabilitation

Market: Religious

Keywords: Concrete, Concrete Rehabilitation, Condition Assessment-Multi-Building, Facade Inspection, Field Testing, Industrial Rope Access, Laboratory Testing and Analysis, Nondestructive Testing, Petrography, Plaza, Preservation Technology, Signature Project, Water Leakage

