



Search Tags: Deterioration

Project Count: 11



Medford High School Pool

Medford, MA

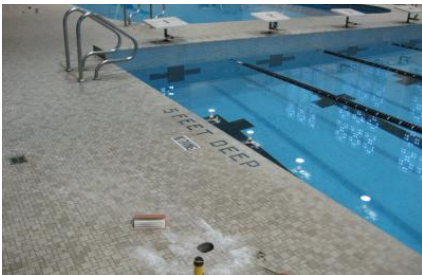
Project Contacts: [Paul Kelley](#), [Matthew Sherman](#)

The swimming pool at Medford High School was constructed in 1970...

Service: [Materials Investigation](#), [Structural Investigation](#), [Structural Rehabilitation](#)

Market: [Education - K-12](#)

Keywords: [Concrete](#), [Concrete Rehabilitation](#), [Condition Assessment](#), [Construction Administration](#), [Corrosion](#), [Deterioration](#), [Laboratory Testing and Analysis](#), [Natatorium](#), [Nondestructive Testing](#), [Petrography](#)



War Memorial Pool Complex

Cambridge, MA

Project Contacts: [Paul Kelley](#), [Matthew Sherman](#)

The pool complex at the War Memorial Recreation Center was...

Service: [Materials Investigation](#), [Structural Investigation](#)

Market: [Sports & Entertainment](#)

Keywords: [Concrete Rehabilitation](#), [Condition Assessment](#), [Corrosion](#), [Deterioration](#), [Field Testing](#), [Laboratory Testing and Analysis](#), [Natatorium](#), [Nondestructive Testing](#), [Petrography](#)



Philipsburg Elementary School

Philipsburg, PA

Project Contacts: [Peter Nelson](#)

Completed in 2004, Philipsburg Elementary School is a two-story...

Service: [Materials Investigation](#)

Market: [Education - K-12](#)

Keywords: [Deterioration](#), [Flooring](#), [Flooring and Coatings](#), [Material-Related](#), [Materials Analysis](#), [Petrography](#)



University of Connecticut, Beach Hall

Storrs, CT

Project Contacts: [Susan Knack-Brown](#), [Stephen Ruggiero](#)

Beach Hall, originally constructed in 1929, is a transitional masonry building with mass masonry walls and an embedded...

Service: [Building Enclosure Investigation](#), [Building Enclosure Rehabilitation](#)

Market: [Education - College & Prep](#)

Keywords: [Deterioration](#), [Masonry](#), [Masonry-Transitional](#), [Preservation Technology](#) , [Water Leakage](#)



University of Connecticut, Wood Hall

Storrs, CT

Project Contacts: [Susan Knack-Brown](#), [Stephen Ruggiero](#)

Wood Hall at the University of Connecticut (UConn), constructed in 1938, is a load-bearing brick masonry building with a gable...

Service: [Building Enclosure Investigation](#), [Structural Investigation](#)

Market: [Education - College & Prep](#)

Keywords: [Cladding / Recladding](#), [Condition Assessment](#), [Deterioration](#), [Masonry-Brick](#), [Preservation Technology](#), [Walls](#), [Water Leakage](#)



General Edwards Bridge

Lynn-Revere, MA

Project Contacts: [Paul Kelley](#)

The General Edwards Bridge is a multiple-span steel-girder bridge over the mouth of the Saugus River where it flows into the...

Service: [Structural Rehabilitation](#)

Market: [Bridge](#)

Keywords: [Bridge](#), [Major Vehicular](#), [Concrete](#), [Deterioration](#), [Emergency Response](#), [Field Testing](#), [Term Contracts and IDIQs](#)



Middlebury College, Bread Loaf Mountain Campus

Middlebury, VT

Project Contacts: [Matthew Bronski](#), [Jeffry Ceruti](#), [Stephen Ruggiero](#)

The Bread Loaf Mountain Campus of Middlebury College is the home of the Bread Loaf School of English, the Bread Loaf Writer...

Service: [Building Enclosure Rehabilitation](#), [Structural Rehabilitation](#)

Market: [Education - College & Prep](#)

Keywords: [Condition Assessment-Multi-Building](#), [Deterioration](#), [Historic](#), [Preservation Technology](#), [Wood](#), [Wood Frame](#)



Ennis House

Los Angeles, CA

Project Contacts: [Carolyn Searls](#)

Designed by Frank Lloyd Wright in the Mayan Revival style, the Ennis House was constructed in 1924 and remains as one of his...

Service: [Building Enclosure Investigation](#)

Market: [Cultural](#)

Keywords: [Award Winning](#), [Concrete](#), [Condition Assessment](#), [Deterioration](#), [Historic](#), [Masonry-CMU](#), [National Register of Historic Places](#), [Preservation Technology](#)



Water Research Foundation, Prestressed Concrete Cylinder Pipe Condition Assessment

United States

Project Contacts: [Rasko Ojdrovic](#)

Prestressed concrete cylinder pipe (PCCP) have been used for water transmission systems for more than sixty-five years...

Service: [Structural Investigation](#)

Market: [Water/Wastewater](#)

Keywords: [Codes & Standards](#), [Condition Assessment](#), [Deterioration](#), [PCCP](#), [Pipe](#), [Pipeline](#), [Research/Development](#)



Youth Development Center, Brick Masonry Chimney Repair

Manchester, NH

Project Contacts: [Greggery Cohen](#), [Gustavo Tumialan](#)

The brick masonry chimney at the Manchester Youth Development Center (YDC) power plant is an 80 ft tall structure that vents...

Service: [Structural Rehabilitation](#)

Keywords: [Chimney/Stack](#), [Concrete](#), [Deterioration](#), [Masonry-Brick](#), [Structural Stabilization](#)



First Street Bridge

Boston-Cambridge, MA

Project Contacts: Erik Farrington, Paul Kelley

The First Street Bridge is a bascule drawbridge carrying traffic westbound over Broad Canal. The bridge suffered from...

Service: Structural Rehabilitation

Market: Bridge

Keywords: Concrete, Deterioration, Metal, Metal-Steel, Term Contracts and IDIQs